



OUR PARKS, OUR FUTURE **LONG RANGE PLAN**

OUR PARKS
OUR FUTURE

AUSTIN PARKS & RECREATION
LONG RANGE PLAN

2018 - 2028

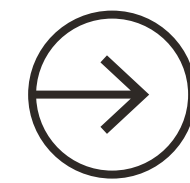


**AUSTIN
PARKS
FOUNDATION**

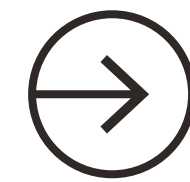




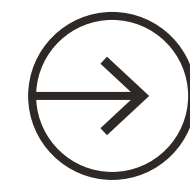
A REVIEW OF THE
LONG RANGE PLAN



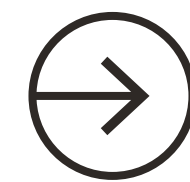
**PROJECT BACKGROUND
& SCHEDULE**



MAJOR PHASES OF WORK



**DRAFT PLAN
RECOMMENDATIONS OVERVIEW**

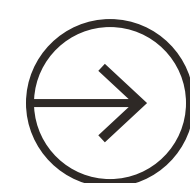


TODAY'S ACTIVITIES



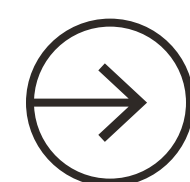
OUR PARKS, OUR FUTURE
PROJECT BACKGROUND & SCHEDULE

INITIAL PURPOSE AND GOALS



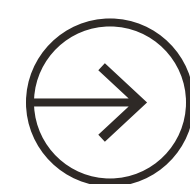
ASSESS STATE OF CURRENT PARK SYSTEM

Conduct a thorough assessment of the condition and quality of the current park system to provide a strong data-driven baseline to inform prioritization and track implementation progress over time



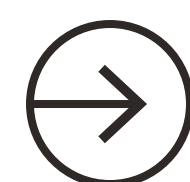
VISION FOR AUSTIN'S PARK SYSTEM IN 2028

PARD will reach its centennial in 2028 and the planning process should focus on engaging the community and city staff to define a new vision that is both inspirational and achievable.



GUIDE FUTURE GROWTH AND DEVELOPMENT

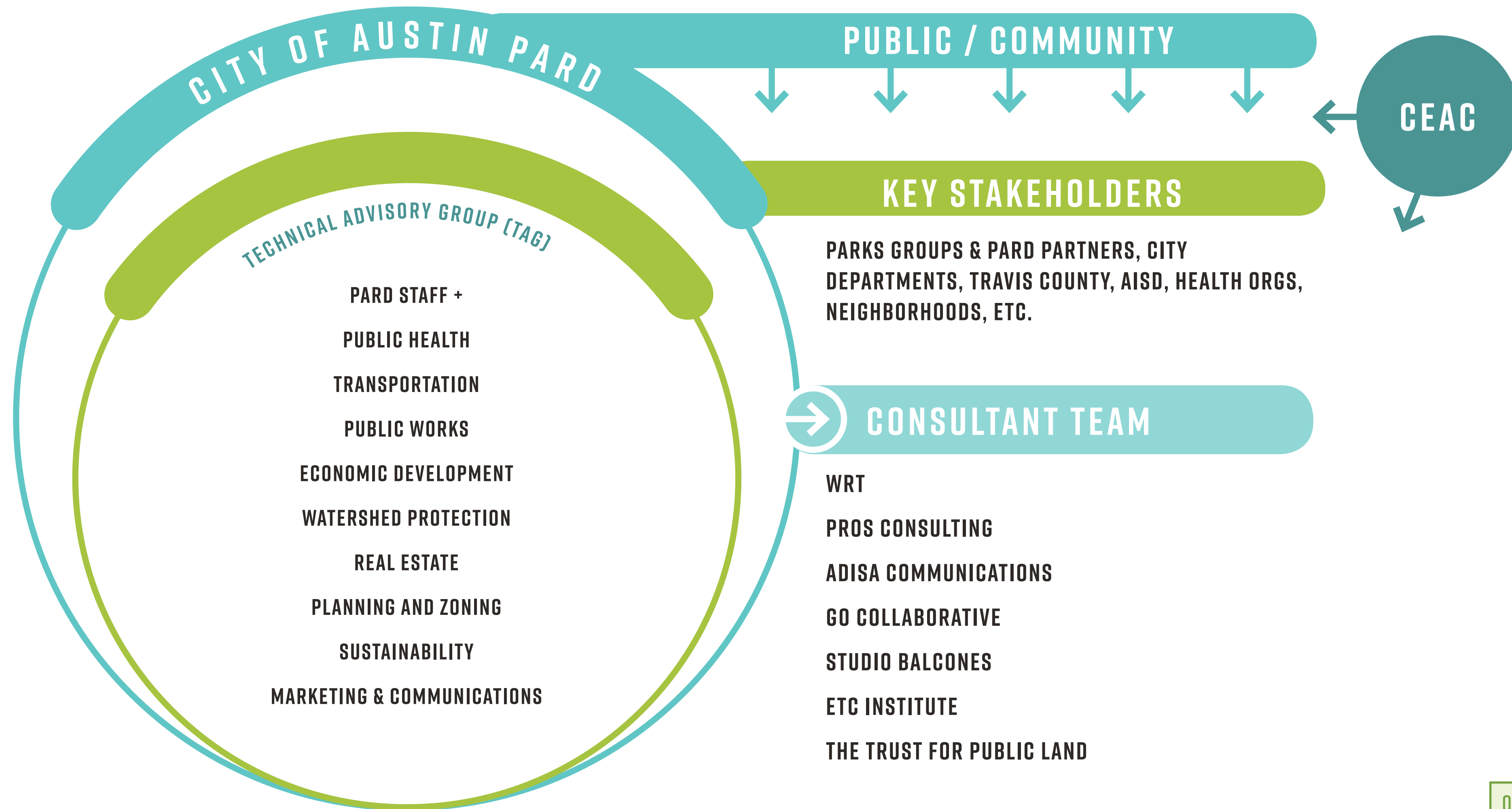
As Austin continues to grow and change, the Long Range Plan provide a careful analysis and guidebook for how and where to invest to ensure a stronger park system.



PARK SYSTEM RECOMMENDATIONS & PRIORITIZATION

Include both citywide strategies and planning area priorities to inform the Capital Improvement Plan and development of Park Master Plans.

MEET THE
PLANNING TEAM

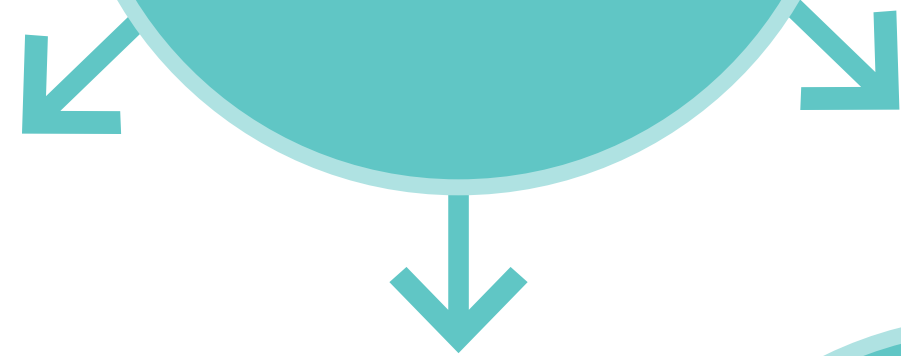


RELATIONSHIP TO OTHER
CITYWIDE PLANS

Austin is:

Livable / Natural and Sustainable
Prosperous / Mobile and Interconnected
Values and Respects its People
Creative / Educated

IMAGINE AUSTIN
VISION



STRATEGIC
MOBILITY
PLAN

PARD
LONG RANGE
PLAN

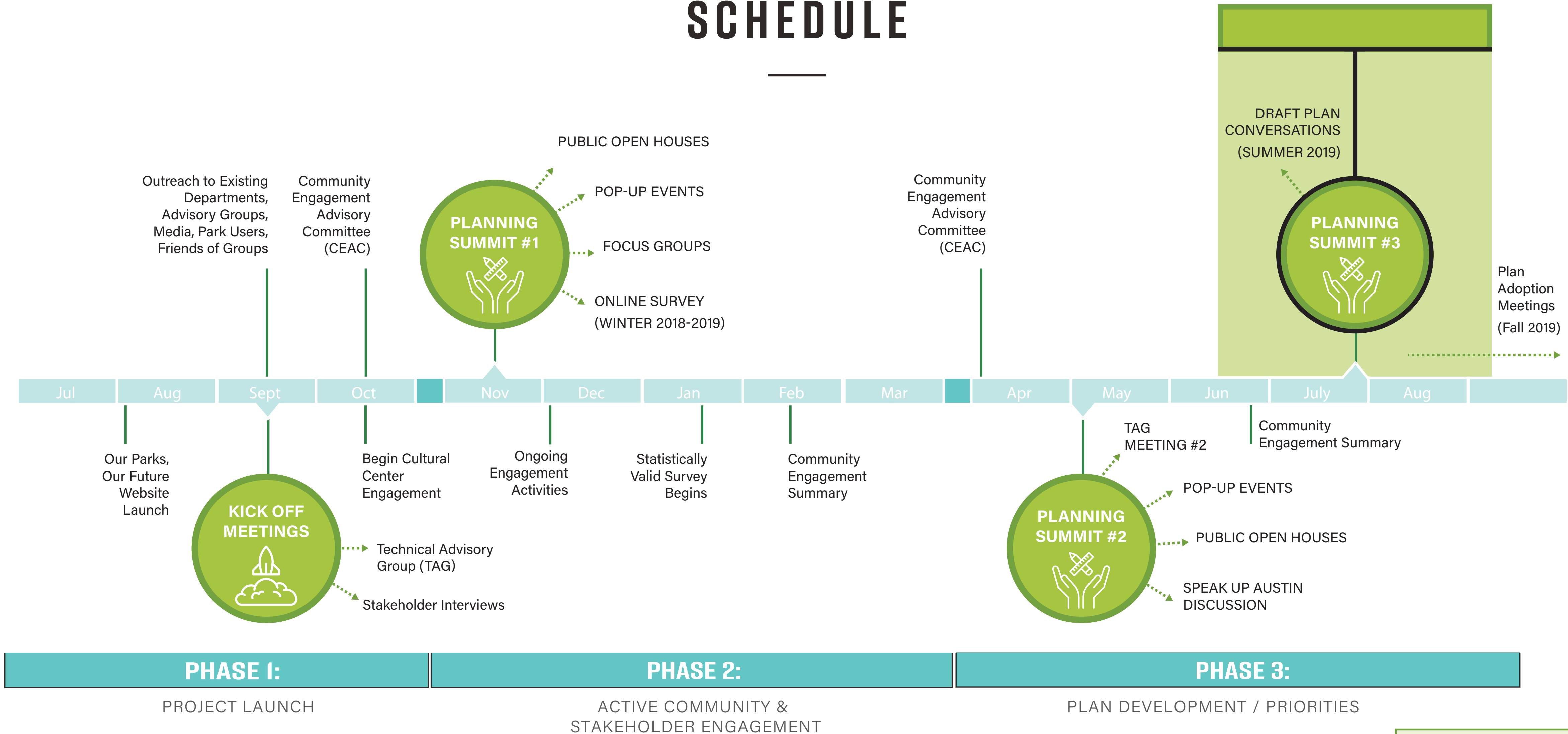
STRATEGIC
HOUSING
BLUEPRINT

INTEGRATED
WATER RESOURCE
PLAN

+ OTHER
CITYWIDE
& AREA
PLANS



LONG RANGE PLAN SCHEDULE



A LOOK AT THE PARK SYSTEM

TODAY

JUST SOME OF THE FACILITIES

300+
PARKS

6
GOLF COURSES

15+
PUBLIC/PRIVATE PARTNERSHIPS

47
VOLLEYBALL COURTS

40
POOLS

26
RECREATION/SENIOR GARDENS

124
TENNIS COURTS

24
HISTORIC BUILDINGS

227
TRAIL MILES

147
PLAYGROUNDS

13
OFF-LEASH DOG AREAS

5
CEMETERIES

20
REC CENTERS

11
MUSEUMS, ARTS & CULTURAL CENTERS

10
STAGES/ AMPHITHEATERS

78
MIXED-USE FIELDS

100
100-YEAR ANNIVERSARY OF PARD (2028)

14 DIVISIONS
700+ FT EMPLOYEES
1,000+ PT & SEASONAL

18,600+
ACRES OF PARKLAND

967K POPULATION IN 2018*
1.143M PROJECTED POPULATION IN 2030*

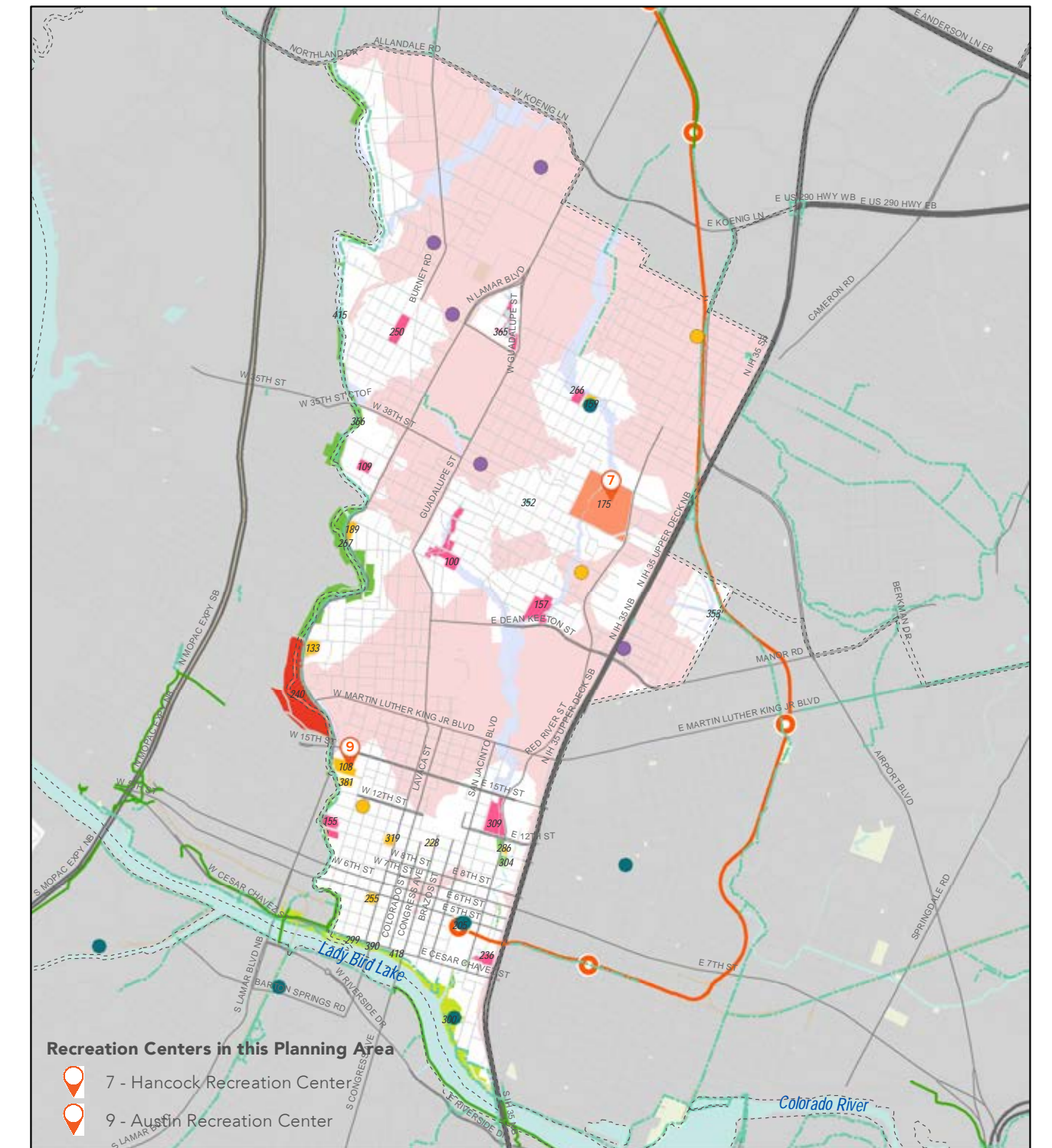
KEY METRICS

SOURCE: AUSTIN PARKS AND RECREATION DEPARTMENT FY18 ANNUAL REPORT AND STRATEGIC PLAN 2017-2021; *FROM AUSTIN AREA POPULATION HISTORIES AND FORECASTS

A LOOK AT THE PARK SYSTEM

TODAY

19,000+ ACRES CITYWIDE



Recreation Centers in this Planning Area
 7 - Hancock Recreation Center
 9 - Austin Recreation Center

- Austin Parks Long Range Plan** PARD Planning Area # 1
- | | | | | |
|---|---|---|---|--|
| <ul style="list-style-type: none"> County Boundary Park Planning Areas City of Austin Limited Purpose Planning 2 Mile ETJ; 5 Mile ETJ Railroad RedLine | <ul style="list-style-type: none"> PARD Cultural Center High School Elementary/Middle School PARD Park Deficient Layer Park Deficient Creek Buffer Area | <ul style="list-style-type: none"> PARD Park by Type Metropolitan District Neighborhood Pocket Nature Preserve | <ul style="list-style-type: none"> Greenbelt School Cemetery Golf Course Other Special Purpose Planting Strips/Triangles Urban Trails Existing Proposed | <ul style="list-style-type: none"> PARD Maintained Park Non-PARD Open Space Waterways Colorado River |
|---|---|---|---|--|

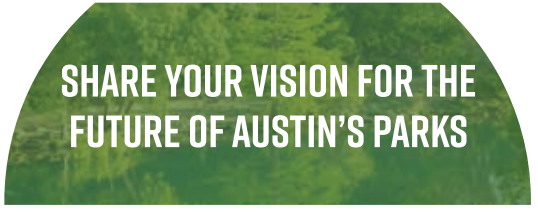
BY PARD PLANNING AREA

OUR PARKS, OUR FUTURE
MAJOR PHASES OF WORK

REACHING OUT & ENGAGING THE PUBLIC



OPEN HOUSES
325+ PARTICIPANTS

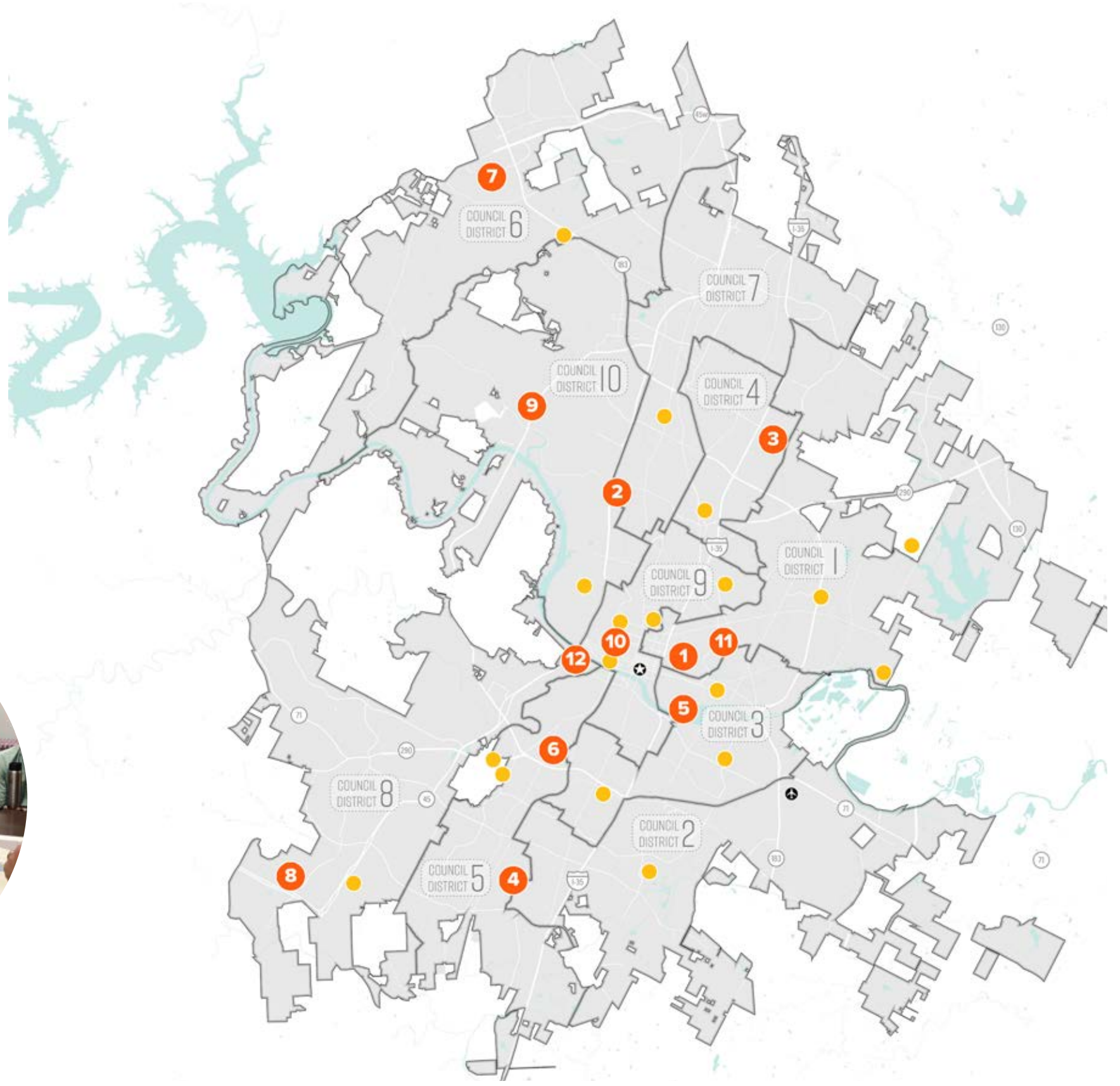


TEXT "SURVEY" TO (512) 580-8850
VISIT AUSTINFUTUREPARKS.ORG/SURVEY

SURVEYS, WEBSITE & SOCIAL MEDIA
925 STATISTICALLY VALID SURVEY RESPONSES
4,400+ COMMUNITY SURVEY RESPONSES
9,000+ COMMUNITY SURVEY COMMENTS



FOCUS GROUPS & INTERVIEWS



● Pop-Up Locations to date

OPEN HOUSE SERIES #1

- 1 George Washington Carver Museum
- 2 Northwest Recreation Center
- 3 Gustavo "Gus" L. Garcia Recreation Center
- 4 Dittmar Recreation Center
- 5 Fiesta Gardens Building

OPEN HOUSE SERIES #2

- 6 South Austin Senior Activity Center
- 7 Anderson Mill Limited District Community Center
- 8 Circle C Community Center
- 9 IBPS Buddhist Temple/FGS Xiang Yun Temple
- 10 Austin Recreation Center

OPEN HOUSE SERIES #3

- 11 Millennium Youth Entertainment Complex
- 12 Zilker Botanical Garden



POP-UP EVENTS
21 EVENTS ATTENDED
297+ VISITORS ENGAGED

ENGAGING KIDS THROUGH ART



OUR PARKS, OUR FUTURE

CONDITION ASSESSMENT

WHAT ARE THE PARK SCORE CARDS?

The draft park score cards (below) are a tool we're piloting to assess the city's parks and determine areas where parks are performing well and areas where we need improvement. Criteria for the score cards include topics of park access, key features, supportive facilities, safety & maintenance concerns, aesthetics, and health.

HOW WILL THE SCORE CARDS BE USED?

These draft score cards will be both a snapshot and a living database PARD can utilize to make data-driven, priority-based decisions for investment. The score cards will be employed to increase accountability, transparency, and equity in park level of service across the city.



Score, out of 5, based on average of topic scores (highlighted in blue)

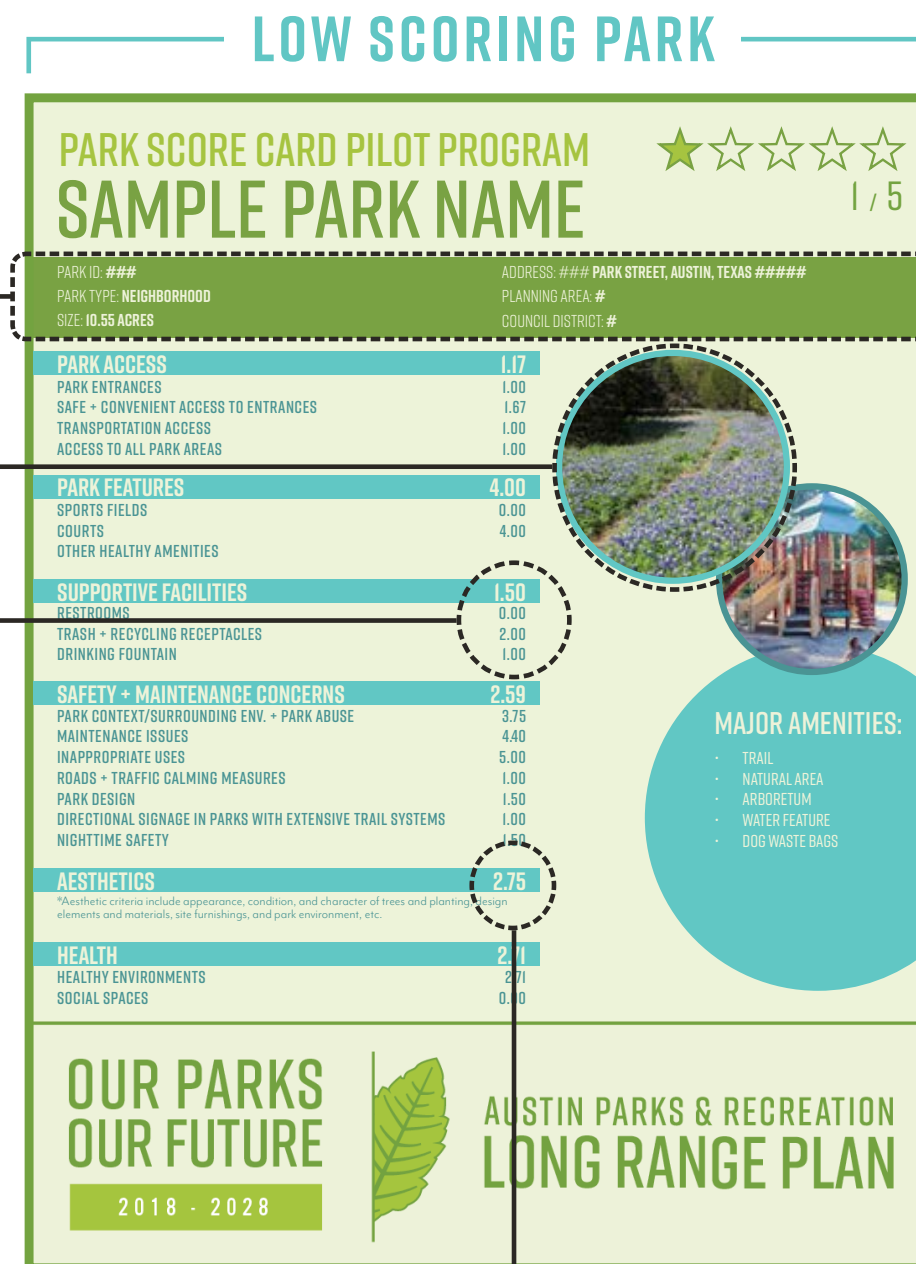
Park metrics: location, type, size, council district, planning area

Photos of park amenities

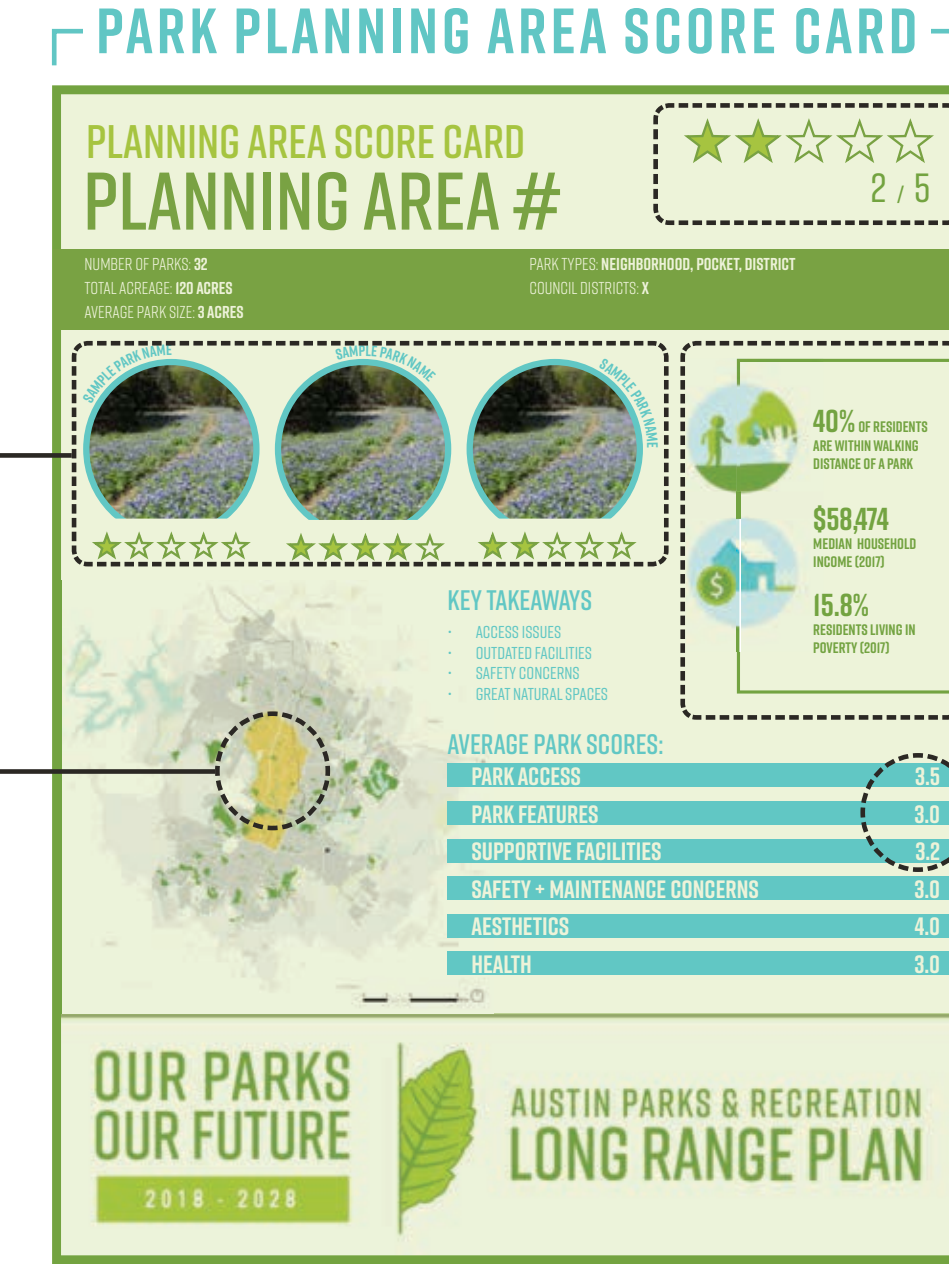
Poor access to visitor amenities (trash, drinking fountains, restrooms)

Major amenities featured in the park

Scored highly in: connections to transportation networks, opportunities for socialization and nature observation, and variety of landscape



Scored poorly in: attractively designed and coordinated park features, well-cared for vegetation and trees, and diversity of uses / activities

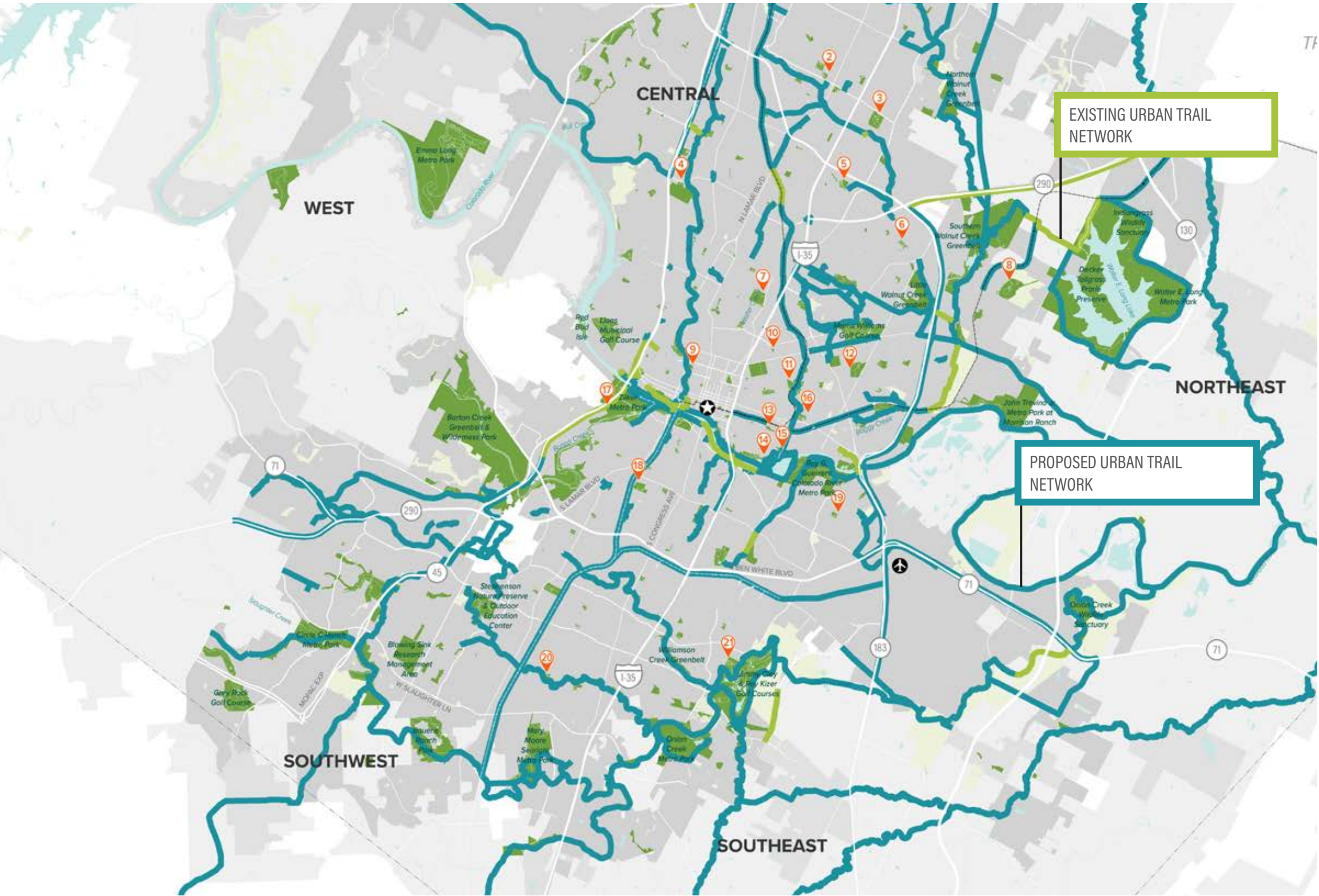


Score based on average of topic scores (highlighted in blue)

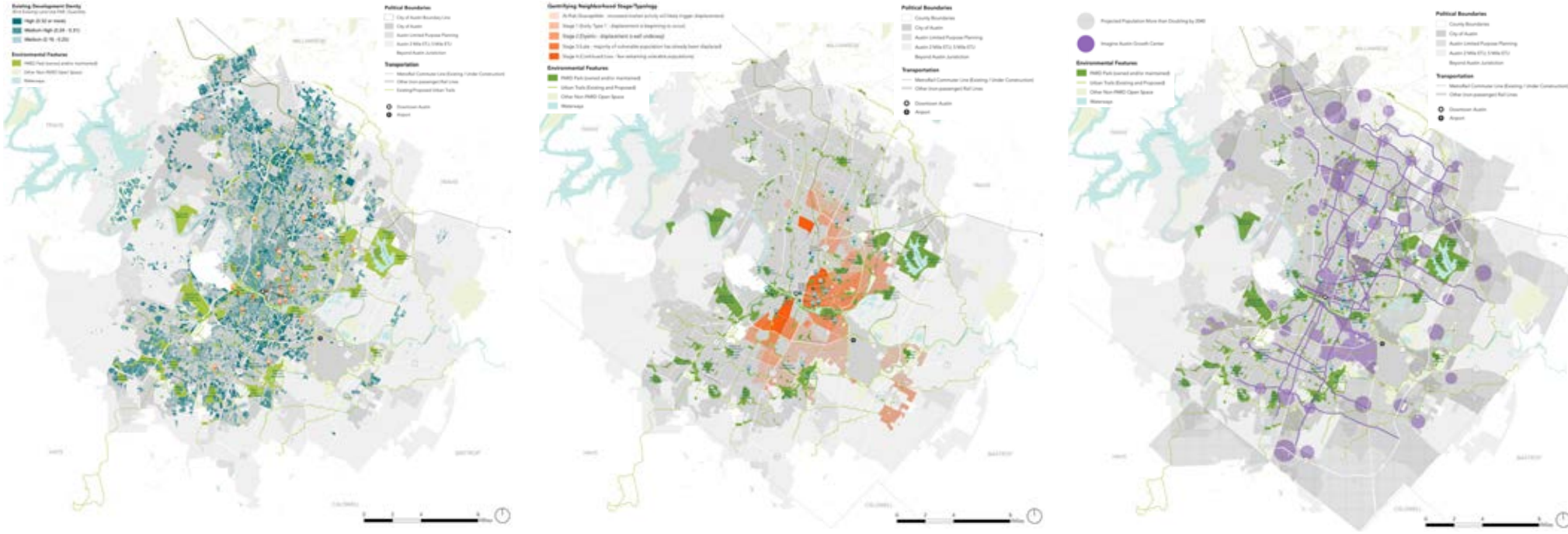
Key stats / metrics about the planning area

Average park scores (taken from individual park assessments)

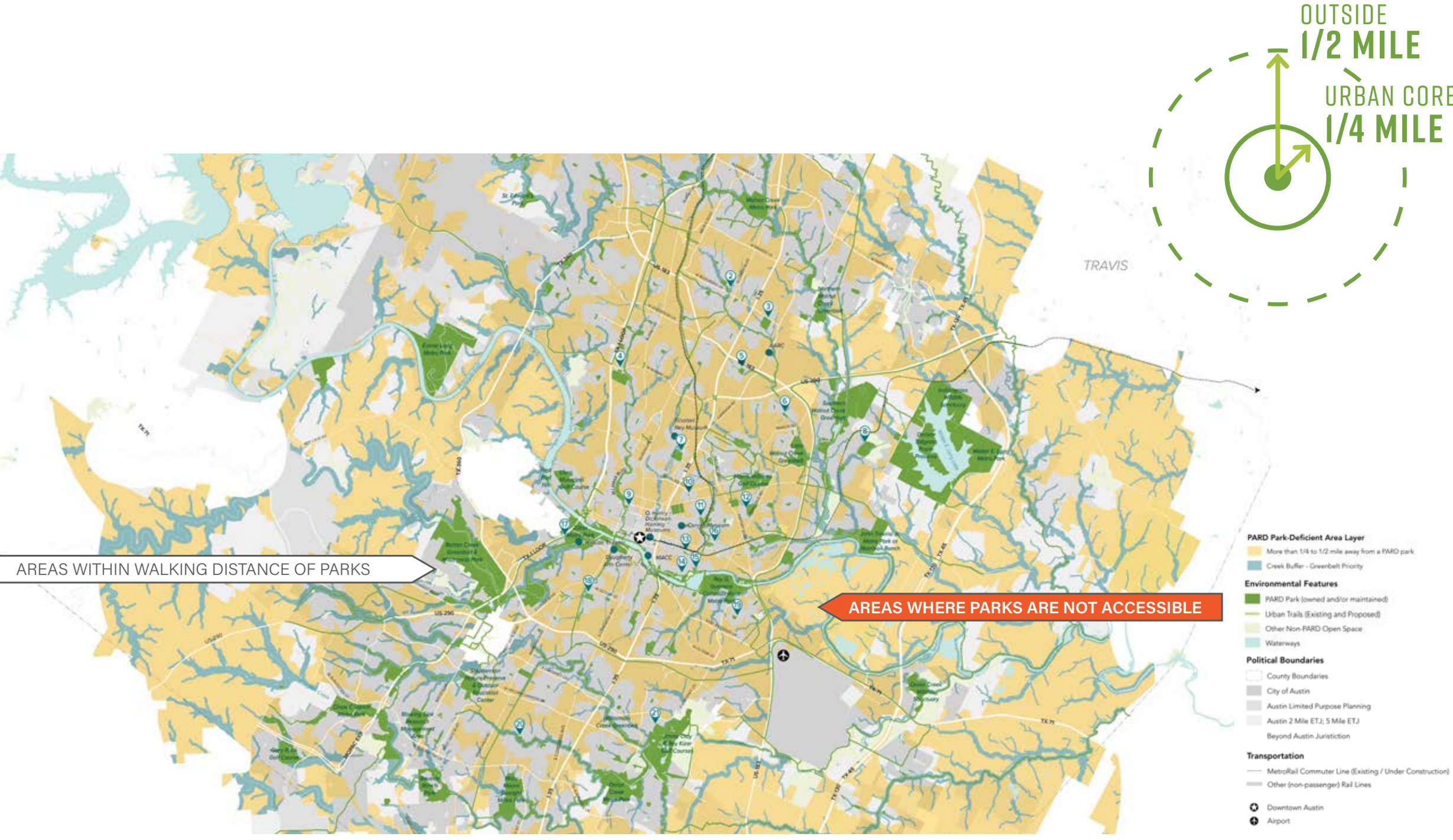
OUR PARKS, OUR FUTURE NEEDS ASSESSMENT



▲ **AUSTIN'S PROPOSED URBAN TRAIL NETWORK**
BASED ON STRATEGIC MOBILITY PLAN RECOMMENDATIONS



▲ **MAPPING OF EXISTING DENSITY, GENTRIFICATION RISK, FUTURE GROWTH**



▲ **MAPPING OF PARK ACCESS BY FOOT**

OUR PARKS, OUR FUTURE COMMUNITY SURVEYS

City of Austin
Parks and Recreation
Long Range Plan Survey

2019

...helping organizations make better decisions since 1982

Findings Report

STATISTICALLY-VALID SURVEY OUR PARKS, OUR FUTURE

JANUARY 2019 - MARCH 2019

925 RESPONSES

OUR PARKS OUR FUTURE 2018 - 2028

AUSTIN PARKS & RECREATION
LONG RANGE PLAN

استبيان تخطيط طويل الأجل

رسالة إدارة المتنزهات ومرافق الترفيه بأوسطن (PARC) هي الهام أوسطن للتعليم واللعب والحماية والتواصل عن طريق إنشاء برامج وخبرات متنوعة في المساحات الطبيعية والأماكن العامة المستدامة. ستساعد نتائج هذا الاستبيان على تحديد الاحتياجات الحالية للمتنزهات ومرافق الترفيه، بالإضافة إلى تشكيل نظام المتنزهات للأجيال القادمة.

1. خلال الأشهر الـ 12 الماضية، كم عدد المرات التي زرت فيها المتنزهات ومرافق الترفيه بأوسطن؟

- يوماً
- أسبوعياً
- شهوياً
- 3-4 مرات في السنة
- 1-3 مرات في السنة
- مطلقاً

2. اختر ما يصل إلى خمسة (5) *برامج* من شأنها زيادة استخدامك للمتنزهات.

- حصول البلدية على الوعاء، والروميا، ومسكرات الترتيب، ومجموعة المتارين الرياضية
- مجموعات الأنشطة مثل نادي المشي، ومجموعات ركوب الدراجات، ومجموعات البيسبول
- دوريات الرياضة المنظمة
- برامج الأطفال
- الفعاليات الثقافية والترفيهية
- تجمعات وحلقات الأحياء
- العروض الموسيقية أو المسرحية
- برامج الطبيعة
- عروض الأعلام في الحدائق
- الفن العام والبرامج الفنية
- الإشراف والعروض التطوعية
- امتيازات مثل تجدير القوارب / الدراجات
- غير ذلك (يرجى التعلق)

OUR PARKS OUR FUTURE 2018 - 2028

Cuộc Khảo Sát Ý Kiến về

Nhiệm vụ của Cơ Quan Công Viên và Giải Khuyến khích Cư Dân Thành Phố Austin kết nối qua các chương trình và hoạt động và các không gian tự nhiên phát triển bền vững xác định các nhu cầu hiện tại của cư dân hình hệ thống công viên cho các thế hệ t.

1. Trong 12 tháng qua, quý vị tới các công viên Austin thường xuyên như thế nào?

- Hàng ngày
- Hàng tuần
- Hàng tháng
- 4-6 lần một năm
- 1-3 lần một năm
- Không bao giờ

2. Lựa chọn tới tối đa năm (5) *chương trình* viên nhiều hơn.

- Các lớp thể dục như yoga, Zumba, các lớp thể hình
- Các nhóm hoạt động như câu lạc bộ đi bộ, nhóm C
- Các tổ chức liên đoàn thể thao
- Chương trình dành cho trẻ em
- Các sự kiện văn hóa và di sản
- Các buổi tập và tiệc của khu phố
- Các buổi biểu diễn âm nhạc hoặc sân khấu
- Các chương trình về thiên nhiên
- Chiếu phim trong công viên
- Các chương trình nghệ thuật và nghệ thuật công cộng
- Các cơ hội phục vụ cộng đồng và tham gia tình nguyện
- Các quầy tiện ích như cho thuê thuyền/xe đạp
- Khác (vui lòng nhận xét)

NUESTROS PARQUES NUESTRO FUTURO

Encuesta de Planificación a Largo

La misión del Departamento de Parques y Recreación de la Ciudad de Austin es inspirar a los ciudadanos a protegerse y conectarse creando programas naturales sostenibles y lugares públicos. Este estudio ayudará a definir las necesidades actuales de los parques y espacios de recreación, así como a planificar para las futuras generaciones.

1. En los últimos 12 meses, ¿qué tan seguido ha visitado los parques de la Ciudad de Austin?

- Diariamente
- Semanalmente
- Mensualmente
- 4 - 6 veces por año
- 1 - 3 veces por año
- Nunca

2. Seleccione hasta (5) cinco *programas* de asistencia a parques locales.

- Clases de actividad física como yoga, Zumba, campamentos de entrenamiento/Boot Camps, o entrenamiento en circuitos
- Actividades de grupo como clubs de caminata, clubs de ciclismo y/o clubs de jardinería
- Ligas de deportes organizados
- Programación para niños
- Eventos culturales y de herencia
- Reuniones y Fiestas de vecindarios
- Concesiones such as boat/bike rentals
- Otras actividades (por favor comentar)

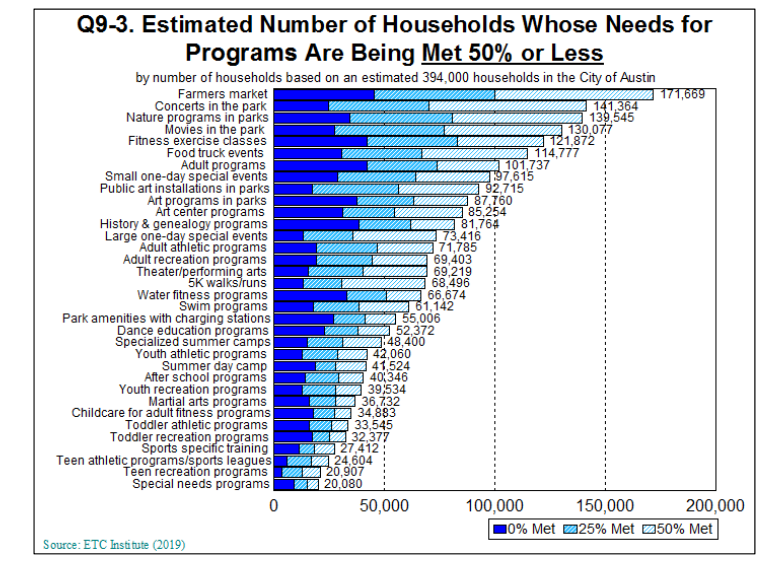
Programming Needs and Priorities

Programming Needs. Respondents were also asked to identify if their household had a need for 34 recreational programs and rate how well their needs for each program were currently being met. Based on this analysis, ETC Institute was able to estimate the number of households in the community that had “unmet” needs for each program.

The seven recreation programs with the highest percentage of households that have an unmet need were:

1. Farmers market – 171,669 households,
2. Concerts in the park – 141,364 households,
3. Nature programs in parks – 139,545 households,
4. Movies in the park – 130,077 households,
5. Fitness exercise classes – 121,872 households,
6. Food truck events – 114,777 households, and
7. Adult programs – 101,737 households (or 29%).

The estimated number of households that have unmet needs for each of the 34 programs that were assessed is shown in the chart below.



Program Importance

In addition to assessing the needs for each program, ETC Institute also assessed the importance that residents place on each program. Based on the sum of respondents' top four choices, the two most important programs to residents were:

1. Farmers market (38%) and
2. Concerts in the park (29%).

The percentage of residents who selected each program as one of their top four choices is shown in the chart below.

COMMUNITY SURVEY OUR PARKS, OUR FUTURE NOVEMBER 27, 2018 - JANUARY 27, 2019

4,400 RESPONSES
9,000 COMMENTS

ETC INSTITUTE

OUR PARKS OUR FUTURE

AUSTIN PARKS & RECREATION
LONG RANGE PLAN

2018 - 2028

IDENTIFYING PRIORITIZATION

COMPARE AREAS OF HIGH PARK NEED WITH PARK AMENITIES BY GEOGRAPHIC AREA

The LRP process includes detailed study of areas that are park deficient, as well as areas that have a high or low level of parks / programs compared to the city's average.

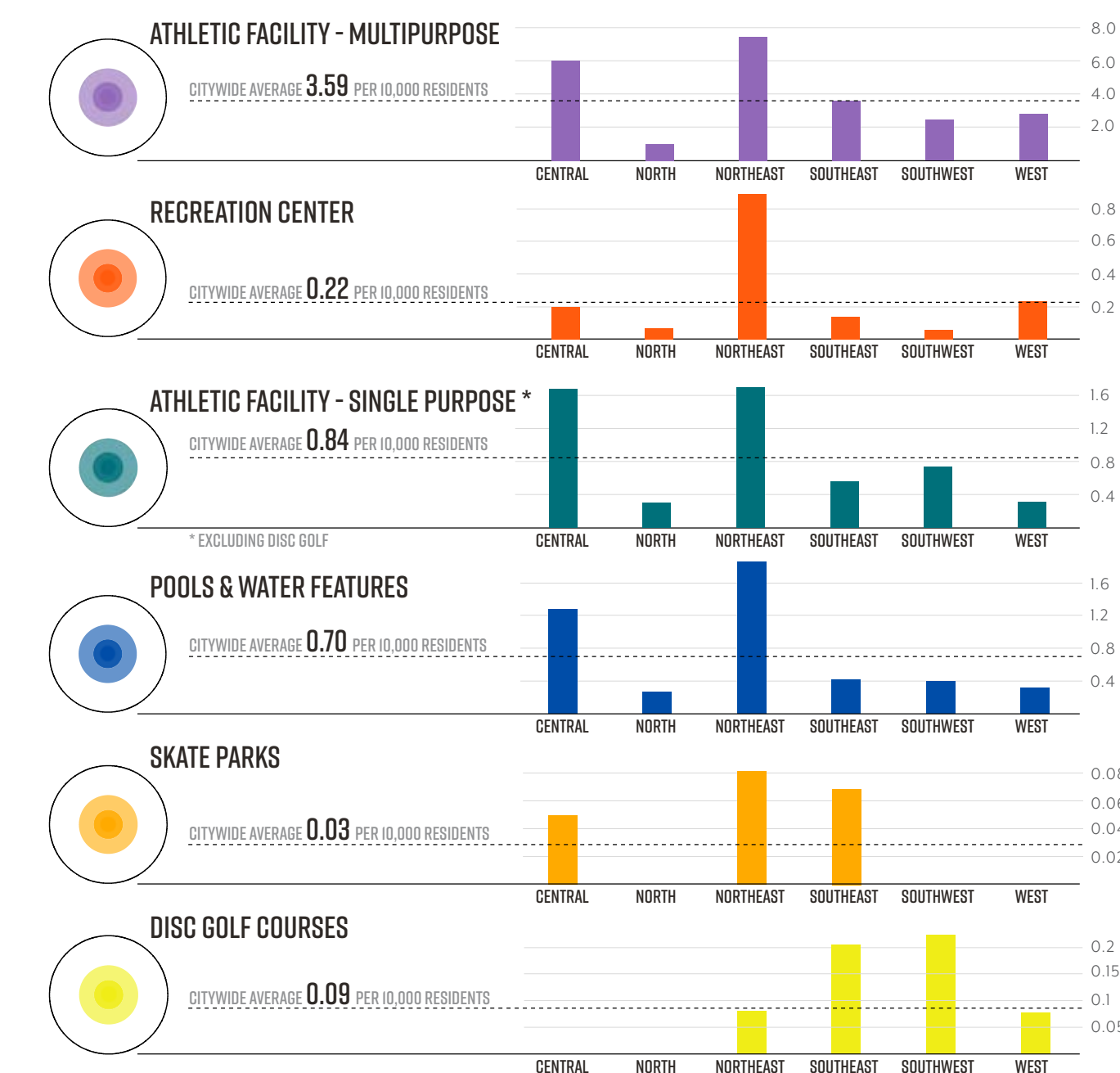
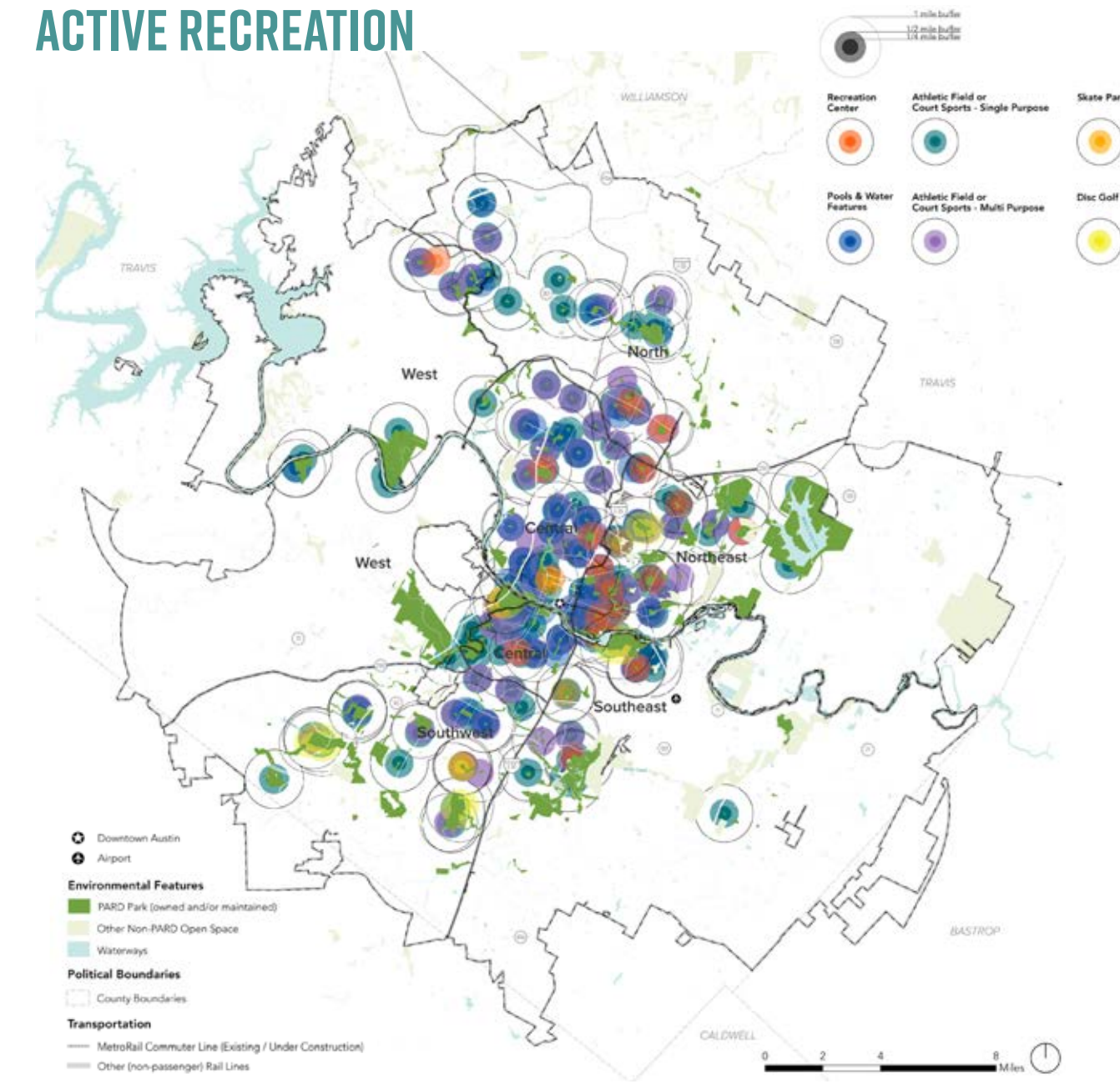
SCORING METHODOLOGY

To be developed for prioritization of PARD LRP investments.

PUBLIC FEEDBACK LOOP

Continual feedback through ongoing meetings and activities with staff, stakeholders and the public combined with these analytical tools lead to prioritization and refinement of goals and strategies.

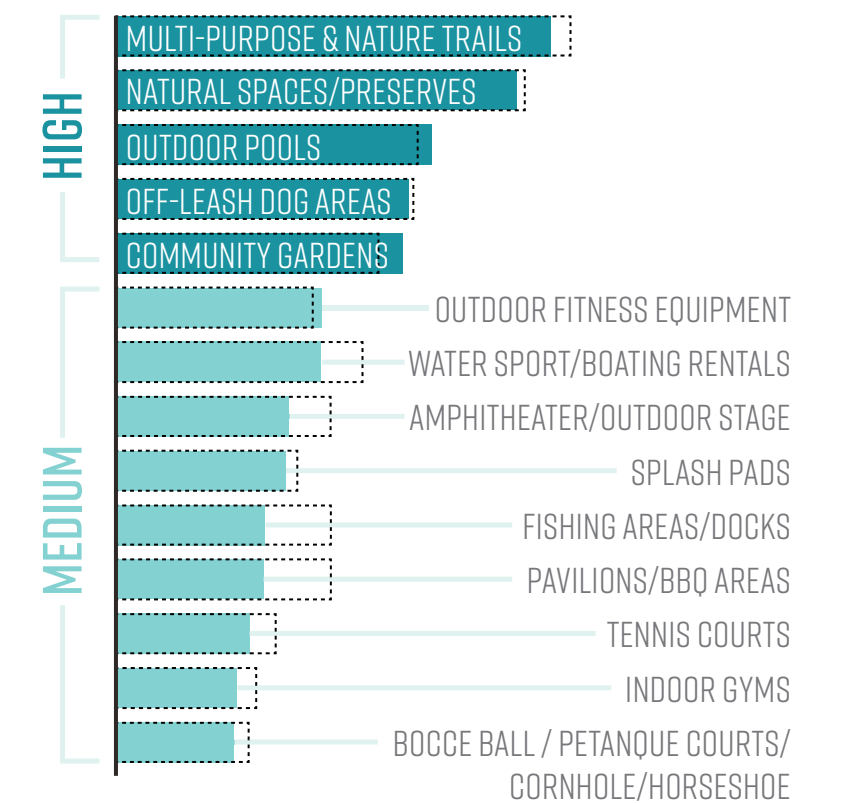
ACTIVE RECREATION



ANALYSIS OF ACCESS TO AMENITIES AND PRIORITY NEEDS BY COMBINED PLANNING AREA

Feedback from surveys of central area residents closely match feedback from Austin residents as whole. Residents would like to see more trails, natural areas, outdoor pools, as well as farmers markets, events (concerts, nature programs, movies in the park) and exercise programs in parks.

FACILITY & AMENITY PRIORITIES

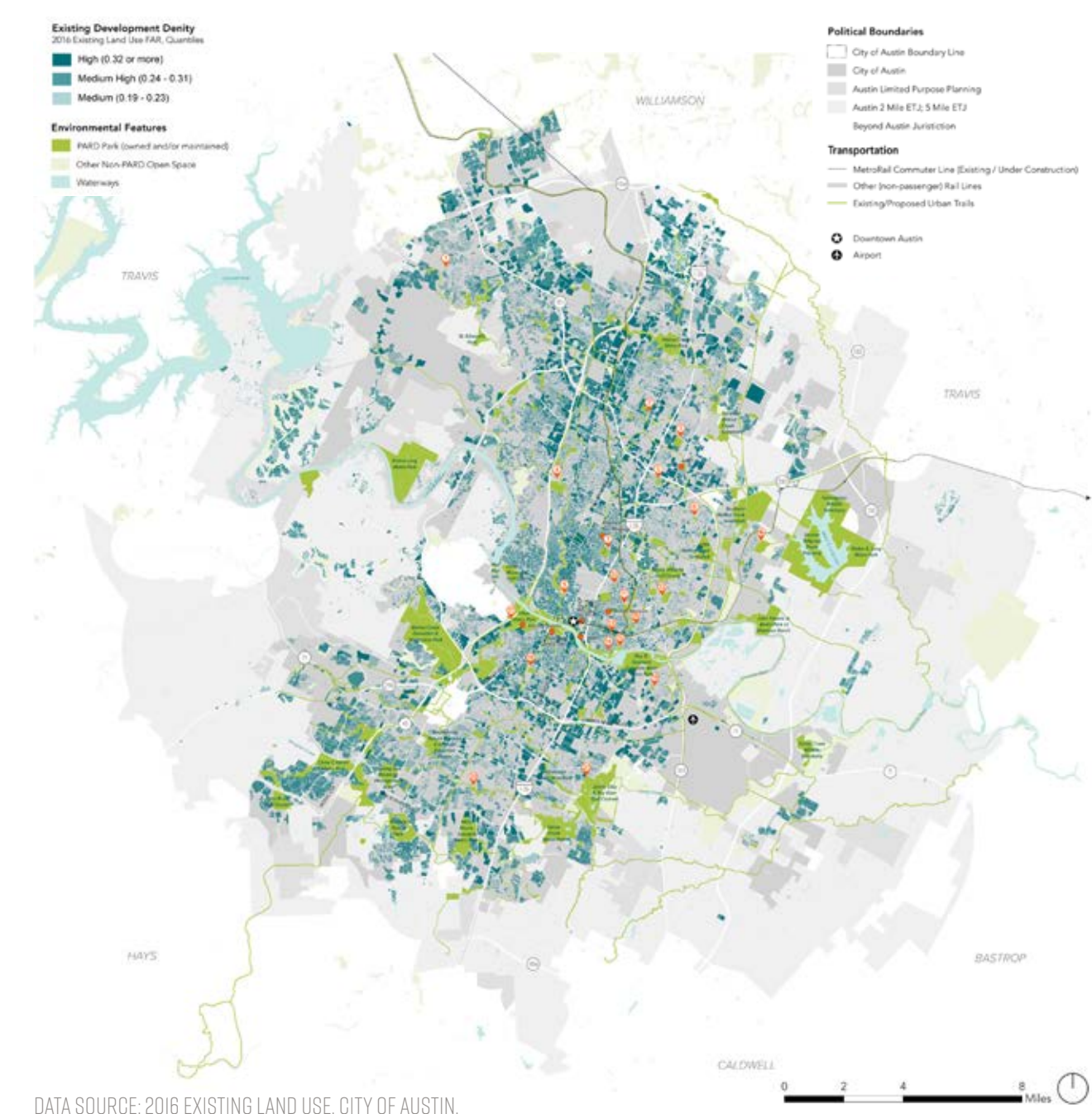


OUR PARKS, OUR FUTURE
DRAFT PLAN OVERVIEW

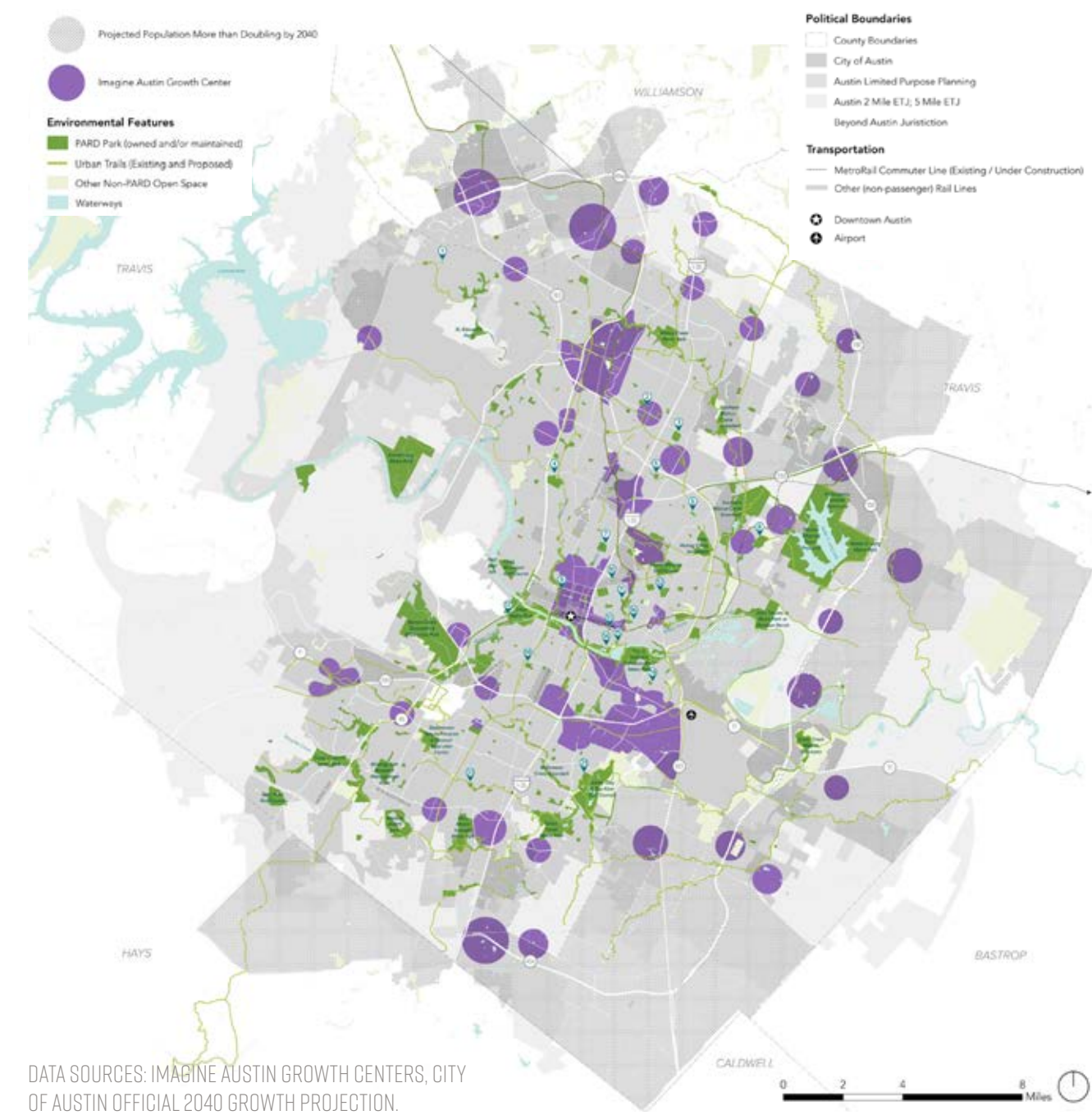


OUR PARKS, OUR FUTURE

GROWTH & PARK NEED ANALYSIS

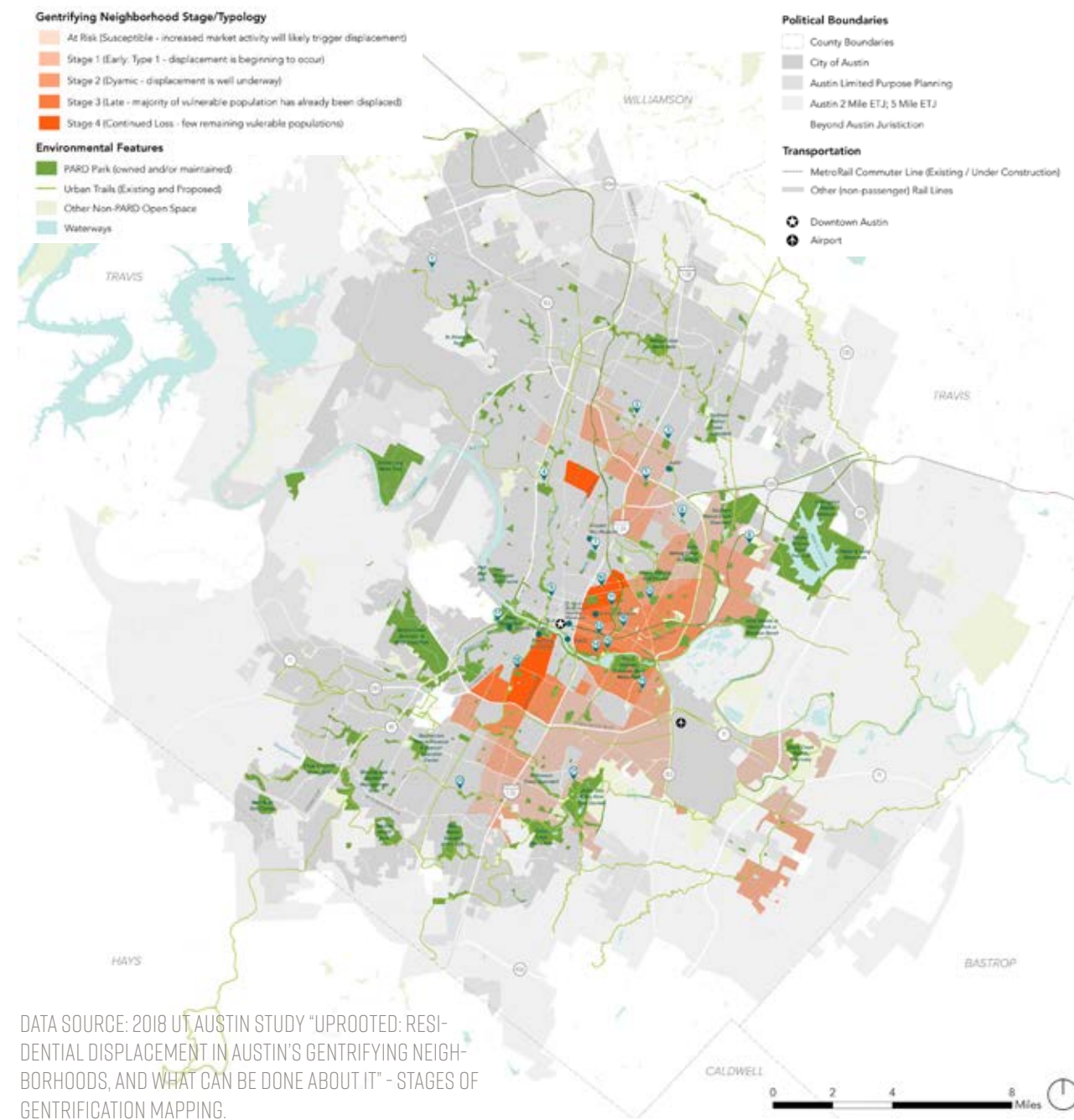


EXISTING HIGH-DENSITY AREAS
OUR PARKS, OUR FUTURE

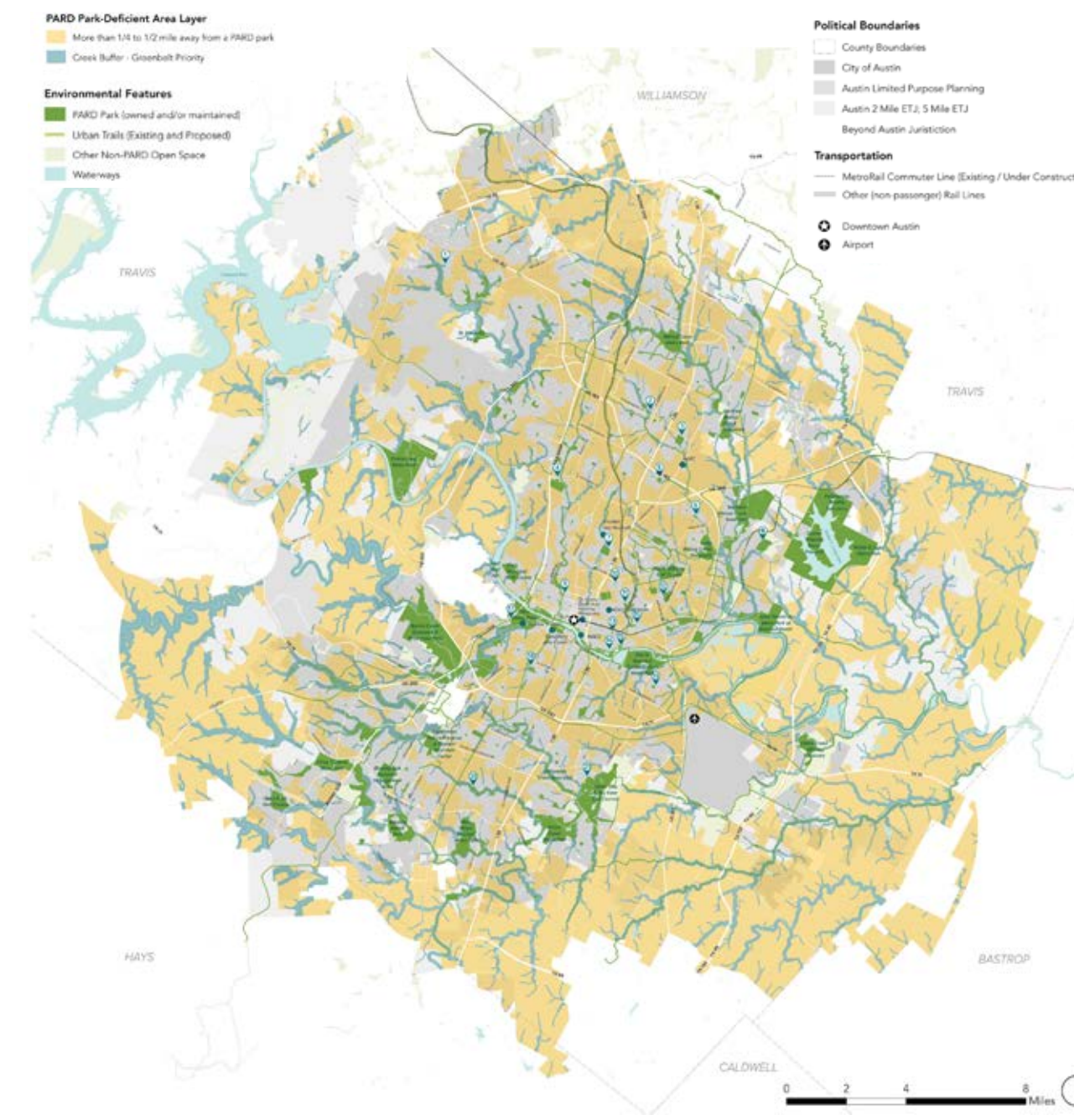


PROACTIVE PARK PLANNING IN HIGH GROWTH AREAS
OUR PARKS, OUR FUTURE

AREAS AT RISK OF GENTRIFICATION
OUR PARKS, OUR FUTURE



IDENTIFYING AREAS THAT LACK PARKLAND
OUR PARKS, OUR FUTURE



OUR PARKS, OUR FUTURE

THEMES

Ten themes emerged from the numerous community engagement events and surveys completed as part of this planning process. Those themes along with the priority needs and citywide analysis form the basis of the system-wide recommendations to follow.

NATURAL EXPERIENCES

People express a desire for parks that feel more natural. This includes undeveloped, wild natural spaces, rustic finishes instead of paved areas and more native plants.

UNSTRUCTURED SPACES

In general, people care less about spaces for specific programming, opting for more multi-use spaces and preserving green, natural and open spaces.

GREEN INFRASTRUCTURE

Proactively use green infrastructure in parks to build a more resilient city. This includes stormwater management, flood protection, heat island effect mitigation, drought tolerance, and native planting/habitat areas.

LINEAR PARKS & TRAILS

People are more interested in parks that allow them to move (walk/run/bike) as opposed to staying in one place. There is an interest in nature and multipurpose trails within PARD parks as well as connectivity between parks along urban trails.

PROXIMITY & ACCESS

People are concerned about both the lack of parks near them and/or their ability to get to parks. This includes walkability issues, lack of adequate parking and the lack of public transit access.

URBAN SPACES

People express a concern that existing parkland in high-density urban areas exists already at critical locations, but are underutilized. The desire is for a renewed commitment to well-maintained green spaces and enhanced programming in urban parks in high-density areas.

PARKS & ARTS/CULTURE

People express a desire for increased arts/culture programming in parks. This includes increased community-focused programming and more cultural centers that could host these kinds of programs.

EDUCATIONAL OPPORTUNITIES

People are interested in more hands-on educational opportunities. This includes youth education, art-based education and summer camps.

INCLUSIVITY

People express a desire for parks and programming to be more inclusive. This includes more publicity about activities, providing free parking, reducing fees that prevent low-income residents from participating, and increasing multi-generational programs and spaces.

CLEANLINESS & SAFETY

People are concerned that parks are not being adequately taken care of. This includes issues around lighting, shade, maintenance, recycling, bathrooms, off-leash dog areas and dog waste disposal. People also expressed concern about the issue of homelessness on many dimensions – safety, park cleanliness, humanitarian - and saw an opportunity to work with homeless population to improve park cleanliness & safety.

OUR PARKS, OUR FUTURE

CITYWIDE STRATEGIES



A. ENSURE PARKS ACT AS A RELIEF FROM URBAN LIFE



B. EXPAND AND IMPROVE PARK ACCESS FOR ALL



C. ACTIVATE AND ENHANCE URBAN PUBLIC SPACES



D. ALIGN PROGRAMS WITH COMMUNITY INTEREST



E. OPTIMIZE AND IMPROVE EFFICIENCY OF OPERATIONS

A

ENSURE PARKLAND OFFERS RELIEF FROM URBAN LIFE



ASEGURAR QUE LOS PARQUES SEAN ALIVIO EN EL AMBIENTE URBANO

The impact of Austin's rapid growth is becoming apparent as Austinites increasingly confront the loss of natural areas and increased development. PARD has to guard the park system's role as a relief from and counterpoint to Austin's increasingly urban context. Likewise, the parks must become more flexible and multi-purpose to support a higher intensity and wider variety of park users.

COMMUNITY ENGAGEMENT THEMES

- NATURAL EXPERIENCES
- UNSTRUCTURED SPACES
- GREEN INFRASTRUCTURE
- LINEAR PARKS & TRAILS
- PROXIMITY & ACCESS
- URBAN SPACES
- PARKS & ARTS/CULTURE
- EDUCATIONAL OPPORTUNITIES
- INCLUSIVITY
- CLEANLINESS & SAFETY

1.

Add between **4,000 and 8,000 acres of new parkland over the next 10 years**, maintaining the current park acres standard of 20 acres/1,000 residents while striving to achieve 24 acres/1,000 residents.

2.

Protect and increase natural areas that support **immersive nature experiences** and provide space for **environmental stormwater benefits**.

3.

Make it easier for Austinites to spend time **interacting with water** (e.g. recreational facilities like outdoor pools and access to natural water bodies like lakes and creeks).

4.

Increase the number of PARD **community gardens**.

5.

Invest in **multi-purpose, unstructured spaces** capable of supporting **flexible uses**. Park elements like small plazas or pavilions with electrical/water hookups, moveable furniture, and multi-purpose athletic fields allow for informal use of space while maintaining a natural, open feel.

6.

Provide **dedicated off-leash dog areas** in appropriate locations to ensure both dog-owners and non-dog-owners can enjoy parks.

7.

Protect and manage natural areas to intentionally **balance recreational use with environmental protection**.

B

EXPAND & IMPROVE PARK ACCESS FOR ALL

EXPANDIR Y MEJORAR ACCESO A LOS PARQUES PARA TODOS



Providing equitable access for all residents is a priority for PARD, and accessibility has been identified as an issue during the LRP Process. PARD can increase accessibility for all by improving trails, signage, communications, and wayfinding, among other things. Any future investment in parks, trails, and associated facilities should be ADA compliant.

COMMUNITY ENGAGEMENT THEMES

- NATURAL EXPERIENCES
- UNSTRUCTURED SPACES
- GREEN INFRASTRUCTURE
- LINEAR PARKS & TRAILS
- PROXIMITY & ACCESS
- URBAN SPACES
- PARKS & ARTS/CULTURE
- EDUCATIONAL OPPORTUNITIES
- INCLUSIVITY
- CLEANLINESS & SAFETY

1.

Prior to any significant master plan or development, work with partner organizations and current and long-time residents to ensure **community involvement** in the process.

2.

Invest in the acquisition of new parkland that can **make parks a part of everyday life** in existing and future **underserved areas**.

3.

Increase the number of entrances and access points to existing parks in order to expand the number of residents within **walking distance of a park**.

4.

Increase **multi-use and nature trails** within the existing PARD park system and continue to acquire land for linear parks and greenbelts that can accommodate larger **trail systems**.

5.

Support the efforts of the Austin Strategic Mobility Plan, city departments, and partners in advancing the **mobility network** beyond the PARD park system.

6.

Achieve a more **even geographic distribution of facilities** that have a strong citywide interest.

7.

Aspire to provide **universal access** (e.g. all ages, all abilities). Park spaces should be accessible, to the greatest extent feasible, by everyone regardless of age, ability, or language. Strive to create **equal access** for all Austinites by reducing barriers to use.

8.

Improve **signage** and **wayfinding** markers at entrances and along trails to help park users navigate with confidence.

9.

Improve the **web-based information** describing the park system to help people quickly find the amenities and experiences they are seeking.

10.

Work with Austin Transportation Department to evaluate the need and appropriate fee structure for **private car parking areas**.

C

ACTIVATE & ENHANCE URBAN PUBLIC SPACES

AVIVAR Y REALZAR LOS ESPACIOS PÚBLICOS URBANOS



The strength of Austin's park system has historically revolved around the iconic natural features and large parks; however, its downtown squares and urban parks have been overlooked and underestimated. These spaces can be activated to extend the benefits of parks to more people through a flexible, partnership-centric approach that expands and enhances use of our public spaces.

COMMUNITY ENGAGEMENT THEMES

- NATURAL EXPERIENCES
- UNSTRUCTURED SPACES
- GREEN INFRASTRUCTURE
- LINEAR PARKS & TRAILS
- PROXIMITY & ACCESS
- URBAN SPACES
- PARKS & ARTS/CULTURE
- EDUCATIONAL OPPORTUNITIES
- INCLUSIVITY
- CLEANLINESS & SAFETY

1. Build on the Downtown Austin Alliance's Downtown Parks Vision to holistically elevate the quality of the **urban public realm**.

2. Invest in more lighting and increased staff and volunteer presence, especially along trails and pathways to ensure parks feel **safe** after dark.

3. Support more **dense, flexible, and diverse programming and amenities** (e.g. temporary seating or play equipment) in urban public spaces within and beyond PARD parkland.

4. Continuously monitor and provide a clear picture of **cost and revenue information** to the community, including community and economic impacts associated with large events.

5. Increase the number of **Farmers Markets** associated with parks and open spaces.

6. Expand PARD's **Historic Preservation and Heritage Tourism Program** to protect, restore, and promote the cultural and historic resources of the park system.

D

ALIGN PROGRAMS WITH COMMUNITY INTEREST

ALINEAR LOS PROGRAMAS CON LOS INTERESES DE LA COMUNIDAD



While there is a high demand for more programs at parks, there is also a strong interest in Austin for natural experience and unprogrammed spaces and activities. As the needs and interests of residents change, program offerings should be evaluated and adjusted to reflect the most relevant programs as needed.

COMMUNITY ENGAGEMENT THEMES

- NATURAL EXPERIENCES
- UNSTRUCTURED SPACES
- GREEN INFRASTRUCTURE
- LINEAR PARKS & TRAILS
- PROXIMITY & ACCESS
- URBAN SPACES
- PARKS & ARTS/CULTURE
- EDUCATIONAL OPPORTUNITIES
- INCLUSIVITY
- CLEANLINESS & SAFETY

1. Provide more **nature-based programs**.

2. Increase **Adult and Senior programming** across multiple categories – active recreation, nature-based and arts & culture.

3. Increase the number, diversity, and equitable distribution of **arts and culture programs** being offered through PARD.

4. Explore partnership strategies to **increase low-income access** to PARD programming.

5. Leverage **“pop-up” programming and temporary uses** (e.g. beer gardens, seasonal markets, parklets, exercise classes, etc.) to activate public spaces and expand access to programs typically held in recreation and cultural centers.

6. Continually assess **community needs** and proactively plan for recreation programming that aligns to these needs and trends.

E

OPTIMIZE & IMPROVE EFFICIENCY OF OPERATIONS

APROVECHAR LO MEJOR POSIBLE Y MEJORAR LA EFICIENCIA DE LAS OPERACIONES



Leverage partnerships and revenue opportunities to elevate the quality of PARD operations and maintenance while upholding equitable park access and ensuring a sustainable and well-balanced PARD budget.

COMMUNITY ENGAGEMENT THEMES

- NATURAL EXPERIENCES
- UNSTRUCTURED SPACES
- GREEN INFRASTRUCTURE
- LINEAR PARKS & TRAILS
- PROXIMITY & ACCESS
- URBAN SPACES
- PARKS & ARTS/CULTURE
- EDUCATIONAL OPPORTUNITIES
- INCLUSIVITY
- CLEANLINESS & SAFETY

1.

Consolidate and improve efficiency of maintenance operations, administrative and program management functions to a central location with appropriate level of office space and facilities.

4.

Develop a clear **organizational framework** for PARD partnerships that is equitable, supportive of PARD's mission and goals, and is regularly evaluated to track and monitor impacts and outcomes.

2.

Engage with and provide **work opportunities** in parks to help people experiencing **homelessness** (e.g. the Workforce First program that pays individuals experiencing homelessness to help remove trash in public parks).

5.

Work with partners to improve existing parks, trails, and facilities by creating and implementing **master plans**.

3.

Improve the **value and awareness** of the parks and recreation system offerings to the community.

6.

Pursue **sustainability and resiliency goals** in all PARD facilities.

OUR PARKS, OUR FUTURE

DISTRICT-LEVEL RECOMMENDATIONS

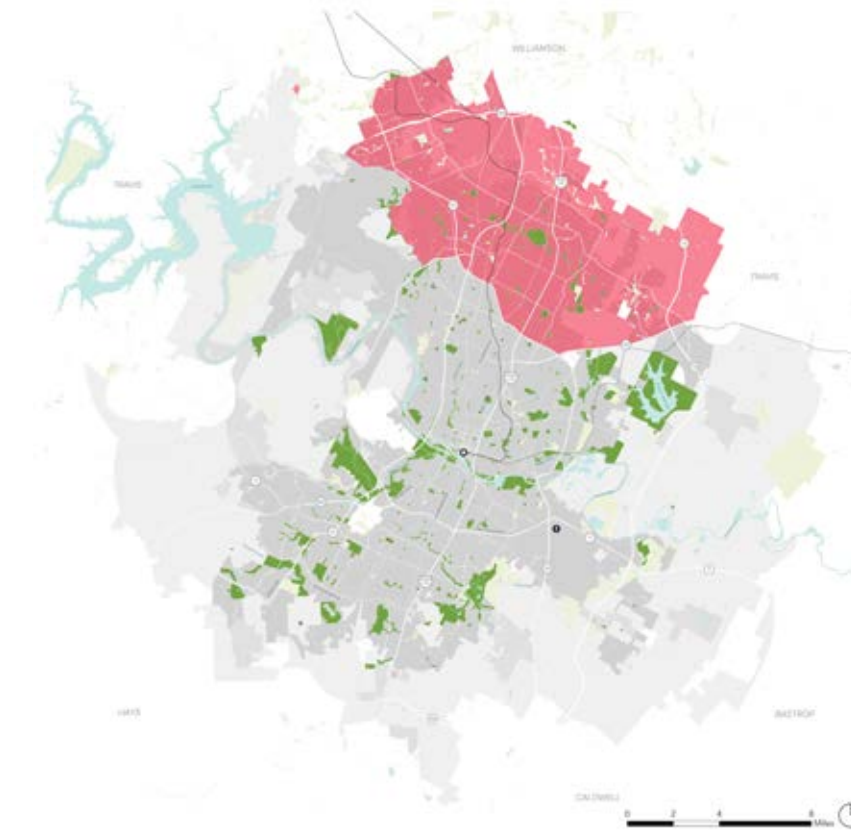


Planning area specific recommendations are included based on the the five city-wide strategies and the specific needs and priorities of each combined planning area.

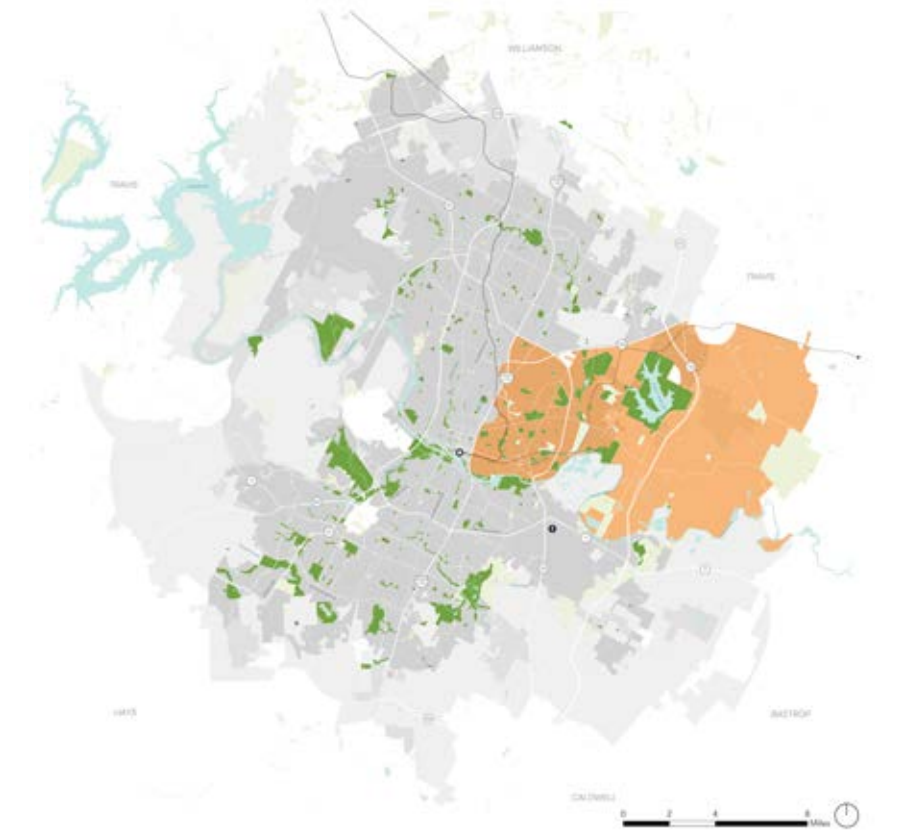
CENTRAL



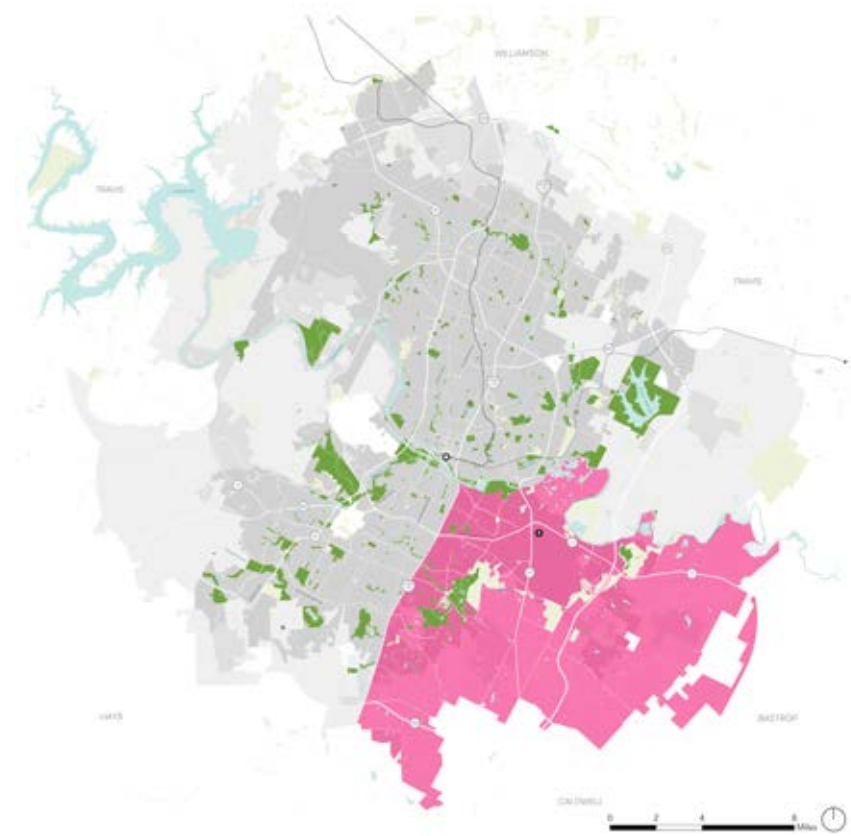
NORTH



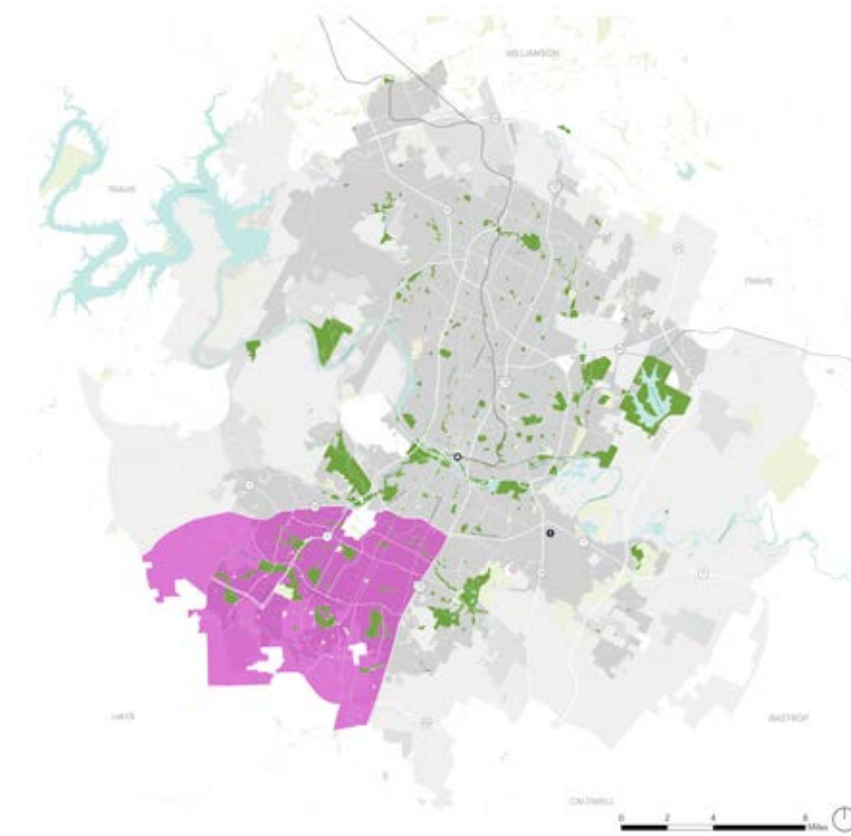
EAST



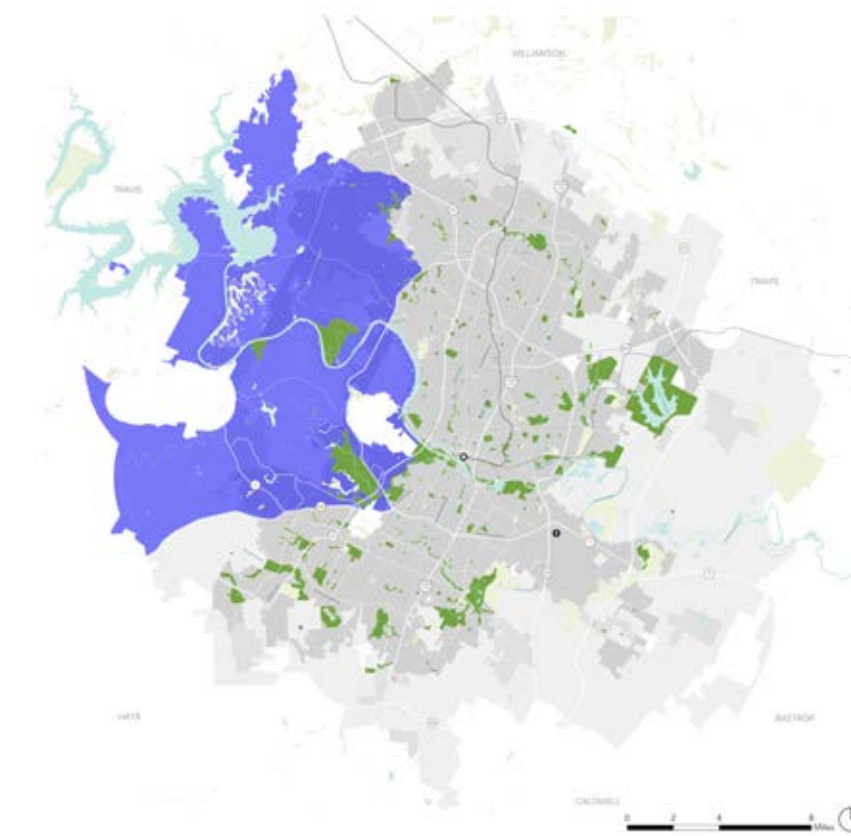
SOUTHEAST



SOUTHWEST



WEST



CENTRAL COMBINED PLANNING AREA RECOMMENDATIONS

ÁREA DE PLANIFICACIÓN COMBINADA AL CENTRAL



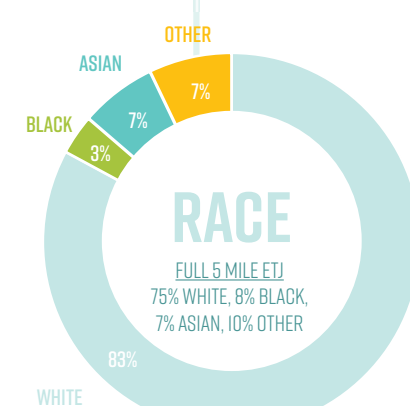
AT A GLANCE UN VISTAZO



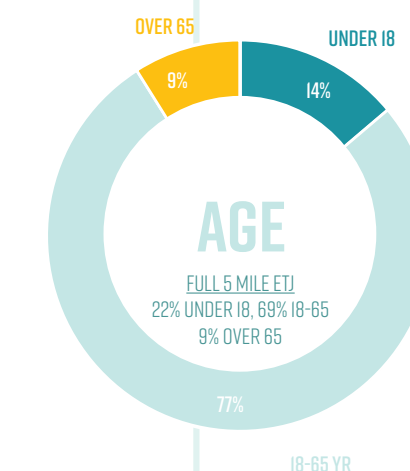
40% OF RESIDENTS LIVE IN PARK DEFICIENT AREAS [FULL 5 MILE ETJ: 51%]



\$58,474 MEDIAN HOUSEHOLD INCOME (2017) [FULL 5 MILE ETJ: \$73,800]



15.8% RESIDENTS LIVING IN POVERTY (2017) [FULL 5 MILE ETJ: 13.5%]



19% HISPANIC [FULL 5 MILE ETJ: 35%]
NOTE: OTHER INCLUDES AMERICAN INDIAN, HAWAIIAN AND PACIFIC ISLANDER, ONE OTHER RACE, & TWO OR MORE RACES

222,537 JOBS
203,740 RESIDENTS
7.8 PEOPLE PER ACRE [FULL 5 MILE ETJ: 5.7]

+50% POP. GROWTH BY 2040*
+77% JOB GROWTH BY 2040**

All "At A Glance" statistics are calculated using the 5 mile ETJ boundary NOT the City of Austin boundary.
* Population Growth Calculated for 2016 to 2040
** Job Growth Calculated for 2010 to 2040

DRAFT RECOMMENDATIONS RECOMENDACIONES PRELIMINARES

PARK DEVELOPMENT & IMPLEMENTATION

- + **ADAMS-HEMPHILL NEIGHBORHOOD PARK** - develop and implement vision plan, improve accessibility and key amenities
- + **BARTON CREEK GREENBELT** - improve access points, signage and wayfinding
- + **BLUNN CREEK PRESERVES** - improve access, trailhead, and nature play
- + **BRUSH SQUARE** - master plan implementation
- + **COVERT PARK AT MT. BONNELL** - design and construction
- + **DOUGHERTY ART CENTER AT BUTLER SHORES** - complete design and implementation
- + **ELISABET NEY MUSEUM** - development of visitors center on north side of Waller Creek
- + **GROVE AT SHOAL CREEK** - park system master plan implementation, includes dog park
- + **LAMAR BEACH** - master plan implementation
- + **MAYFIELD PARK** - rehabilitate buildings, grounds, and ponds
- + **OLD BAKERY EMPORIUM & VISITORS CENTER** - rehab and plaza renovation
- + **PERRY NEIGHBORHOOD PARK** - work with AISD to improve neighborhood access
- + **SEAHOLM WATERFRONT** - master plan implementation
- + **SOUTH AUSTIN NEIGHBORHOOD PARK** - master plan implementation, includes trail & multiuse field improvements
- + **STECK VALLEY GREENBELT** - improvements and pocket park development
- + **REED NEIGHBORHOOD PARK** - continue renovations
- + **WALSH BOAT LANDING** - implement improvements
- + **WEST AUSTIN NEIGHBORHOOD PARK** - master plan implementation, includes addressing failing retaining walls
- + **WALLER CREEK** - continue to collaborate with Waller Creek Conservancy improvements
- + **WOOLDRIDGE SQUARE** - master plan implementation
- + **ZILKER METROPOLITAN PARK** - construct loop trail extension and bridge; master plan implementation including: Eliza Springs Historic Amphitheater Rehab, Sunken Gardens Rehab, Zilker Gardens Rehab, Zilker Clubhouse Rehab
- + Work with AISD to implement parks at:
Pre-K Schools: Uphaus Early Childhood Center, Read Pre-K Demonstration
Elementary Schools: Webb Primary, Gullet, Reilly, Wooten, Pillow, Brentwood, Brown, Lee, Pease, Ridgetop, Dawson, Travis Heights, Zilker, Galindo, Barton Hills, Becker, Doss, Hill, Bryker Woods, Casis, Mathews, Highland Park, Austin St Hospital

Middle Schools: Lamar, Burnet, Webb, Murchinson, O. Henry
Middle & High Schools: Richards School For Young Women Leaders
High Schools: Mccallum, Travis, Premier at Travis, Anderson, Austin, Travis County Juvenile Detention Center, Phoenix Academy, Leadership Academy
Special Needs: Rosedale

ENVIRONMENTAL IMPROVEMENTS

- + **SHOAL CREEK** - reestablish the trail connection in landslide area

PARTNERSHIPS

- + **BRACKENRIDGE TRACT** - work with UT to retain golf and/or recreational opportunities
- + **NORWOOD HOUSE** - continue to collaborate with the Norwood Foundation to rehab the house and implement the master plan
- + **PEASE DISTRICT PARK** - continue to collaborate with Pease Park Conservancy on improvements
- + **SHOAL CREEK CORRIDOR** - continue to collaborate with Shoal Creek Conservancy on improvements
- + **TOWN LAKE HIKE AND BIKE TRAIL** - work with UT to promote park trail connectivity to Red Bud Isle

ACQUISITIONS

- + **BLUNN CREEK TRAIL** extension to **LADY BIRD LAKE BOARDWALK TRAIL**
- + **WEST AND EAST BOULDIN CREEK GREENBELT** - acquisition and trail development
- + New parkland within park deficient areas

MASTER PLANNING

- + **BEVERLY S SHEFFIELD NORTHWEST DISTRICT PARK** - including Level 2-3 development
- + **BUTLER SHORES**
- + **GILLIS NEIGHBORHOOD PARK** - including reinvestment in key amenities
- + **ZILKER METROPOLITAN PARK** - including Umlauf, Zilker Botanical Garden, and Austin Nature & Science Center

FEASIBILITY STUDIES

- + **HANCOCK GOLF COURSE** - study feasibility of golf and other recreational opportunities that can enhance sustainability of course

WHAT DID WE MISS?



WHAT WE NEED FROM YOU TODAY

TODAY'S MEETING

1. Talk to us and review the **Citywide Strategies**
2. Provide feedback on **Combined Planning Area Recommendations**
3. Tell us about your next park action / how you will get involved?
4. Create a bumper sticker!
5. Make sure we have your email for updates

WHAT WE NEED FROM YOU THIS SUMMER

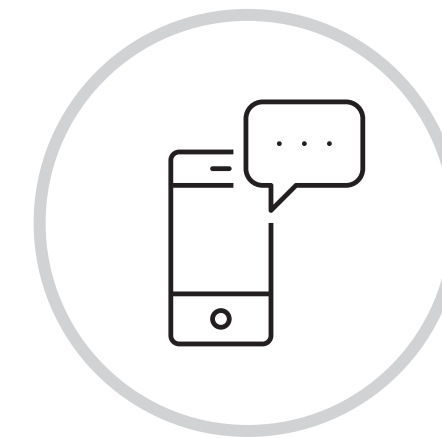
NEXT STEPS

**Please review the Draft Plan
online & provide your feedback!**

www.austinfutureparks.org

**Available for comment through
September 9th**

Stay tuned for Pop-up Information



STAY CONNECTED

Kim McKnight, Project Lead
Park Planning Division

E: Kim.McKnight@austintexas.gov

Nancy O'Neill, Project Manager, WRT

E: noneill@wrtdesign.com