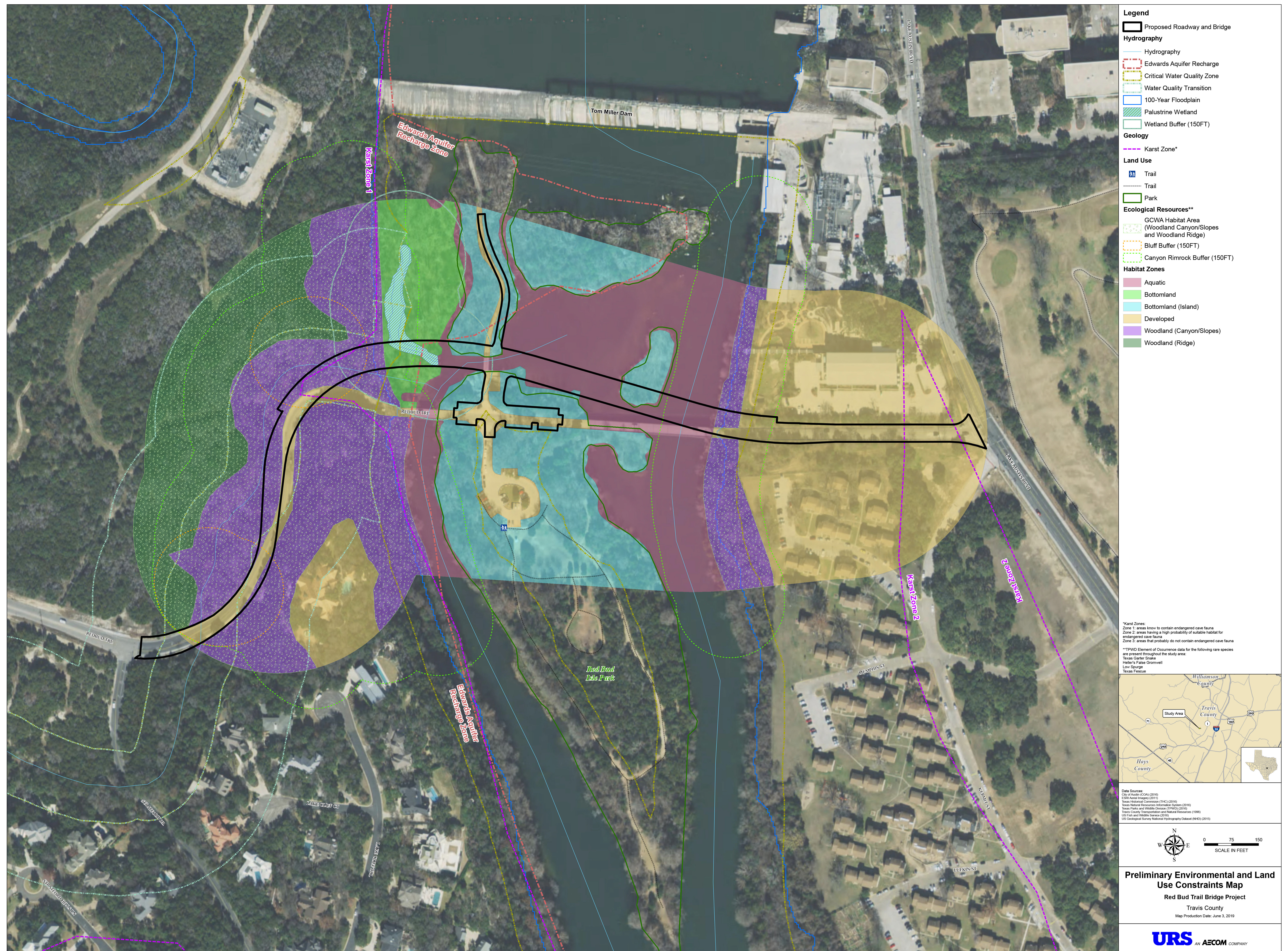




Redbud Trail Bridge Project





Redbud Trail Bridge Project

Environmental Analysis of Project Area

- Document understanding of environmentally sensitive areas
- Conduct detailed field investigations for critical environmental features
- Coordinate with regulatory agencies including:
 - U.S. Fish and Wildlife Service
 - U.S. Army Corps of Engineers
 - Texas Dept. of Transportation
 - Texas Commission on Environmental Quality
 - Texas Parks and Wildlife Department
 - Multiple City of Austin Departments
- Work with design engineers to avoid, minimize, or mitigate environmental impacts

