

Consolidated Rental Car Facility (CONRAC)

Design-Build Team: Austin Commercial & DWA Architects

1,450,000 square foot of Public Parking, Car Rental Ready/Return Parking, Public Area and Associated Rental Car Company support space

Project Facts

- 800 public parking spaces on ground floor
- 1,840 Rental Car ready/return stalls on 3 levels of elevated cast-in-place concrete garage
- 1,152 Rental Car storage stalls on cast-in-place concrete roof
- New customer service building
- New multi-level Quick Turn Around (QTA) Facility
- Roadways, Elevated Roadways and Ramps necessary for ingress and egress

Procurement Approach

- The project will comply with the City of Austin's MWBE ordinance via notifications of all subcontractors and vendors on the City's availability list.
- Bid Notices and bid packages will be distributed to all local planrooms and trade publications.
- Events will be scheduled on a regular basis to update the market on the progress of the project during design.

Preliminary Project Schedule

- Project is constructed on a Fast-Track basis
- Design documents complete - Fall of 2012
- Construction Documents Complete - Spring of 2013
- Procurement on limited trades begins - Early Fall of 2012 - Elevators, Fire Protection, Utilities, QTA special systems, Rebar Material, Concrete Material & Structural Formwork
- Major Procurement - Spring of 2013 - Civil, Balance of Structural, Architectural, Mechanical, Plumbing and Electrical

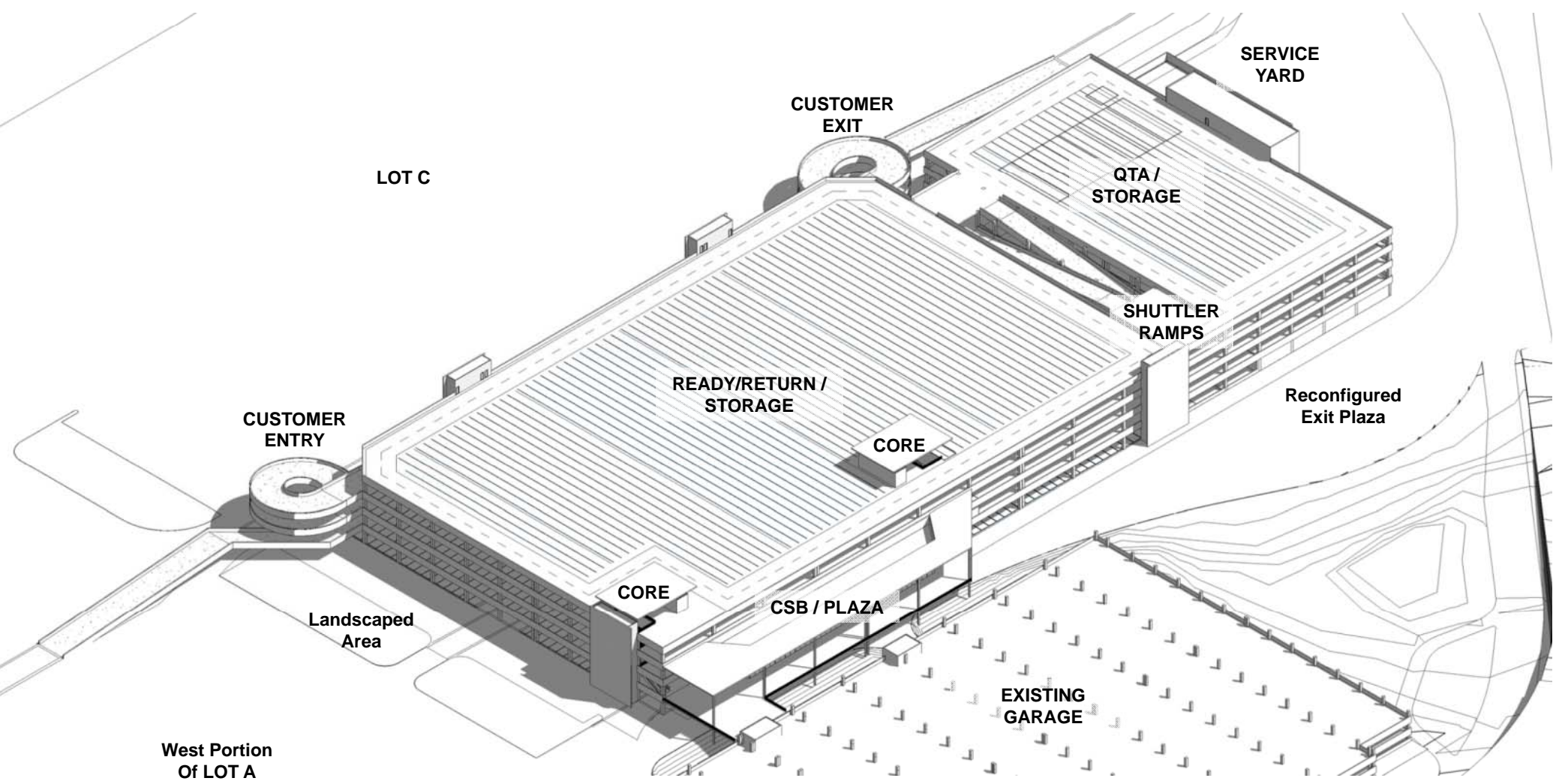
LEVEL 6 MODEL PHOTO



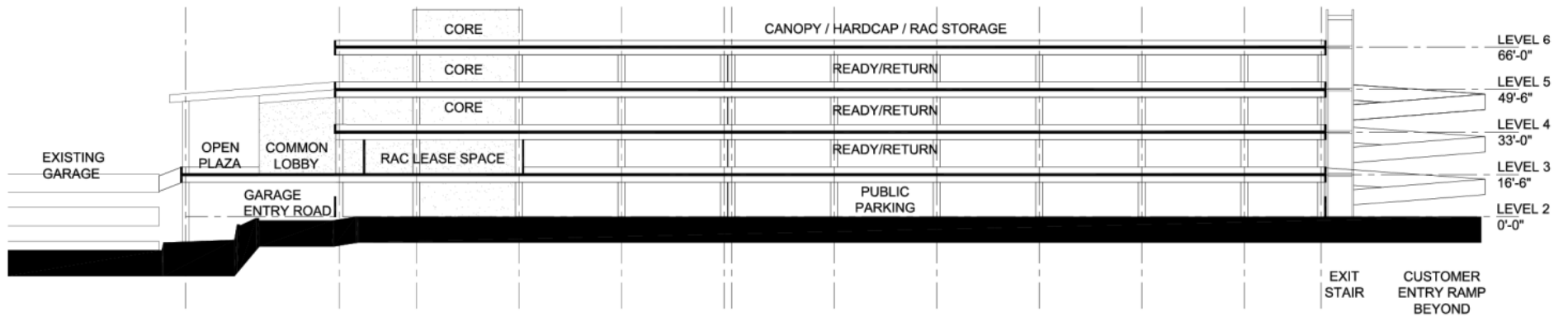
Consolidated Rental Car Facility at
AUSTIN-BERGSTROM INTERNATIONAL AIRPORT



AERIAL VIEW



CONCEPTUAL SECTION



**NORTH-SOUTH
BUILDING SECTION**

1"=40'-0"

