

ENVIRONMENTAL BMPs

FOR FIREWISE LANDSCAPING

Presented by:





Pollution Prevention and Reduction

Protecting Water Quality in Austin through:

- Emergency Spill Response
- Investigating Pollution Incidents
- Inspections for environmental compliance at commercial and industrial facilities.
- Manning Austin's 24/7 Pollution Hotline





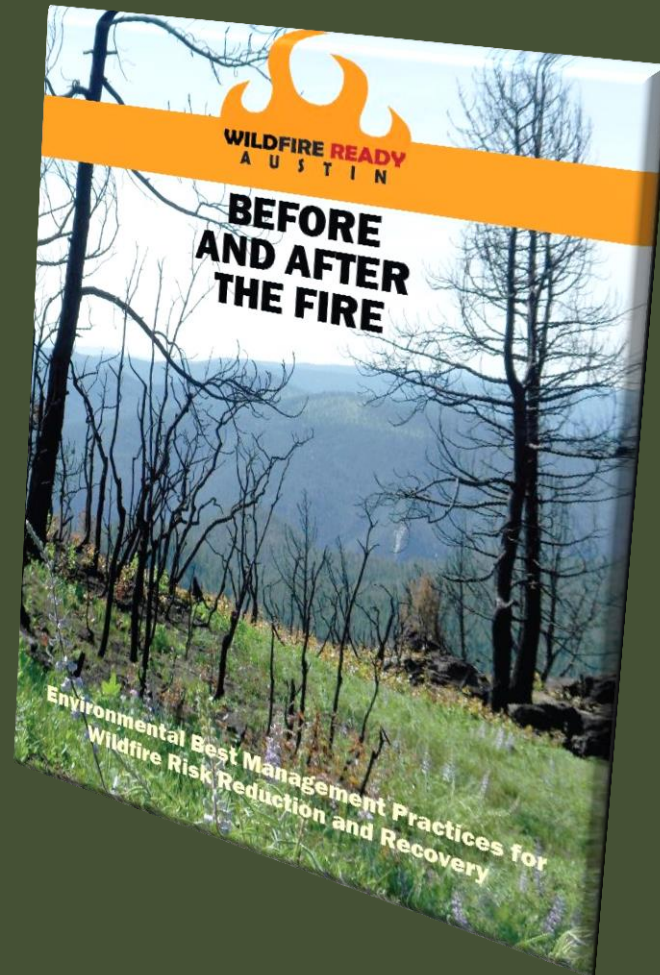
How did Watershed Protection get involved?

- *Already had a close working relationship with AFD through spill response duties.*
- *Following the 2011 wildfires, the community turned to Watershed for environmental expertise.*



Development of Environmental BMPs

www.AustinTexas.gov/WildfireEnviroBMPs



Wildfire is a natural occurrence in Central Texas

Many local ecosystems actually depend on fire



- **Fire-adapted community:**
“A community of informed and prepared citizens that collaboratively take action to safely co-exist with wildland fire”



Firewise Principles and Environmental BMPs Working Together

Firewise
Principles

A
Resilient,
Healthy
Landscape

Environmental
Stewardship



Harden the Structure



Effective Defensible Space and the Home Ignition Zone



Account for Topography



Limit Fuel Continuity

Good Examples



Limit Fuel Continuity

Bad Examples



Plant Selection



Dead Wood, Snags, Brush Piles



Property Limits

Property management activities are limited to your property.

A white sign with the words "NO TRESPASSING" in bold, black, capital letters is attached to a metal fence post. The sign is slightly tilted and appears to be made of a fabric or paper material. The background shows a grassy field and trees under a clear sky.

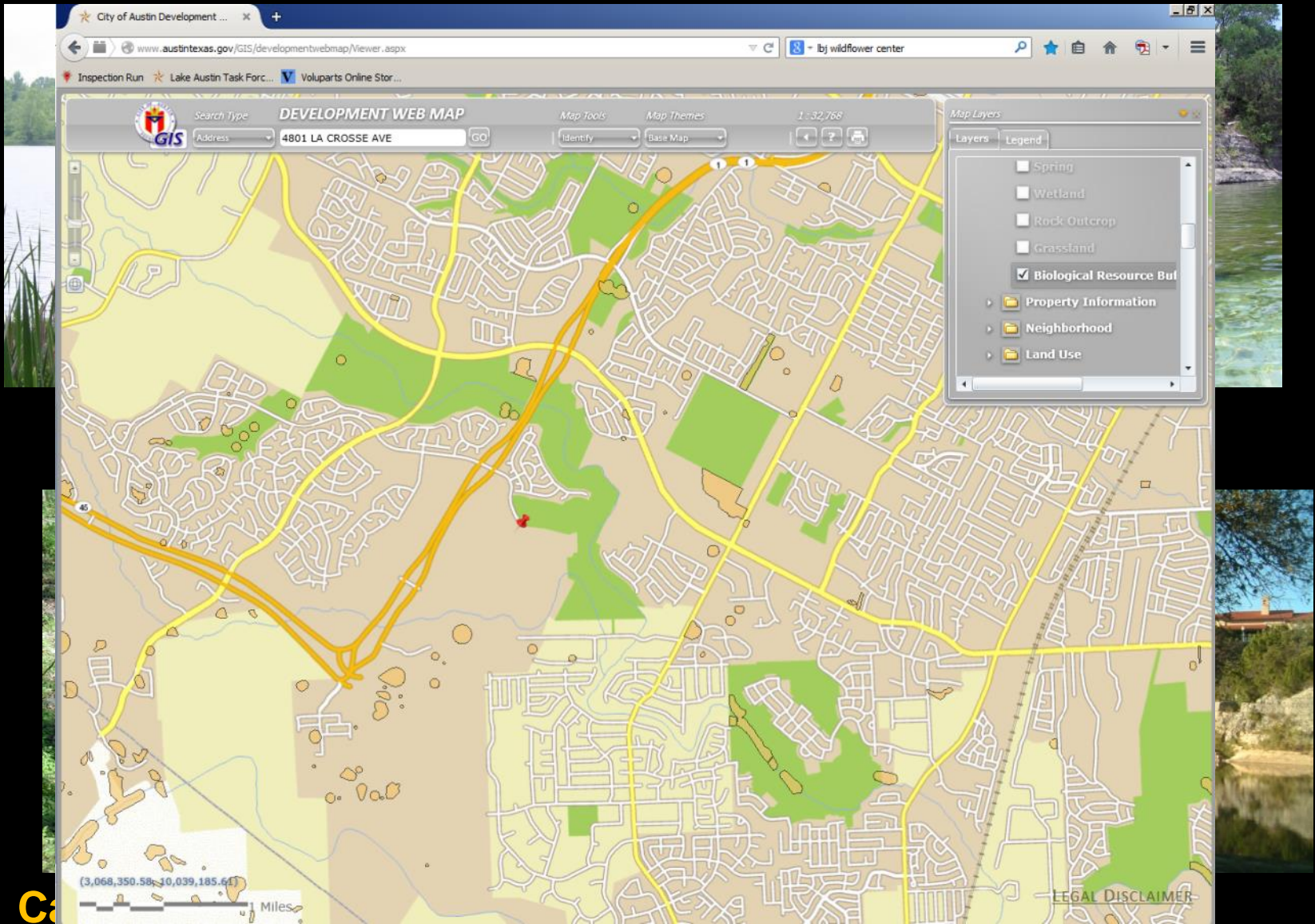
NO TRESPASSING

Property Limits

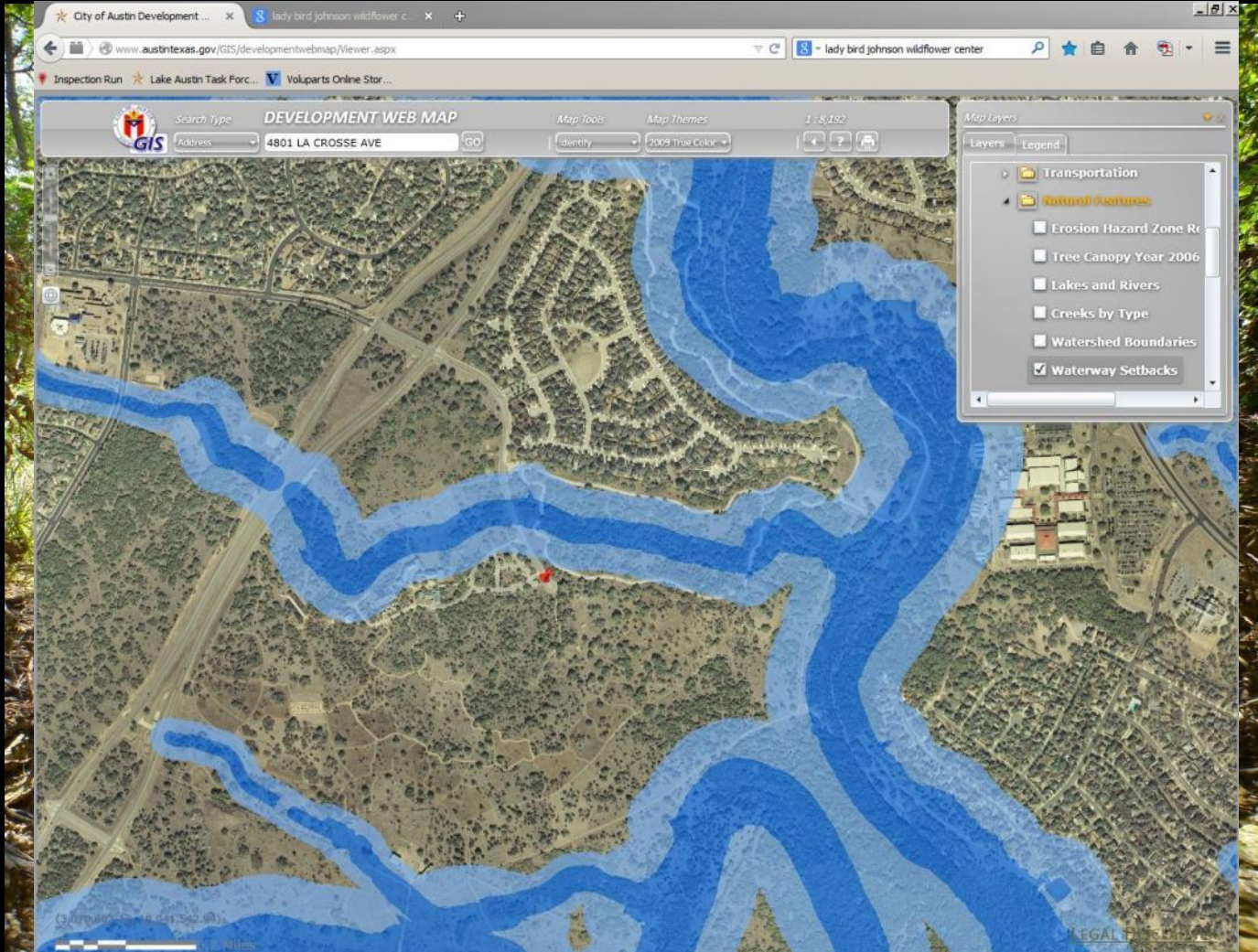
If you have concerns about potentially hazardous conditions on adjacent property, contact the respective landowner.



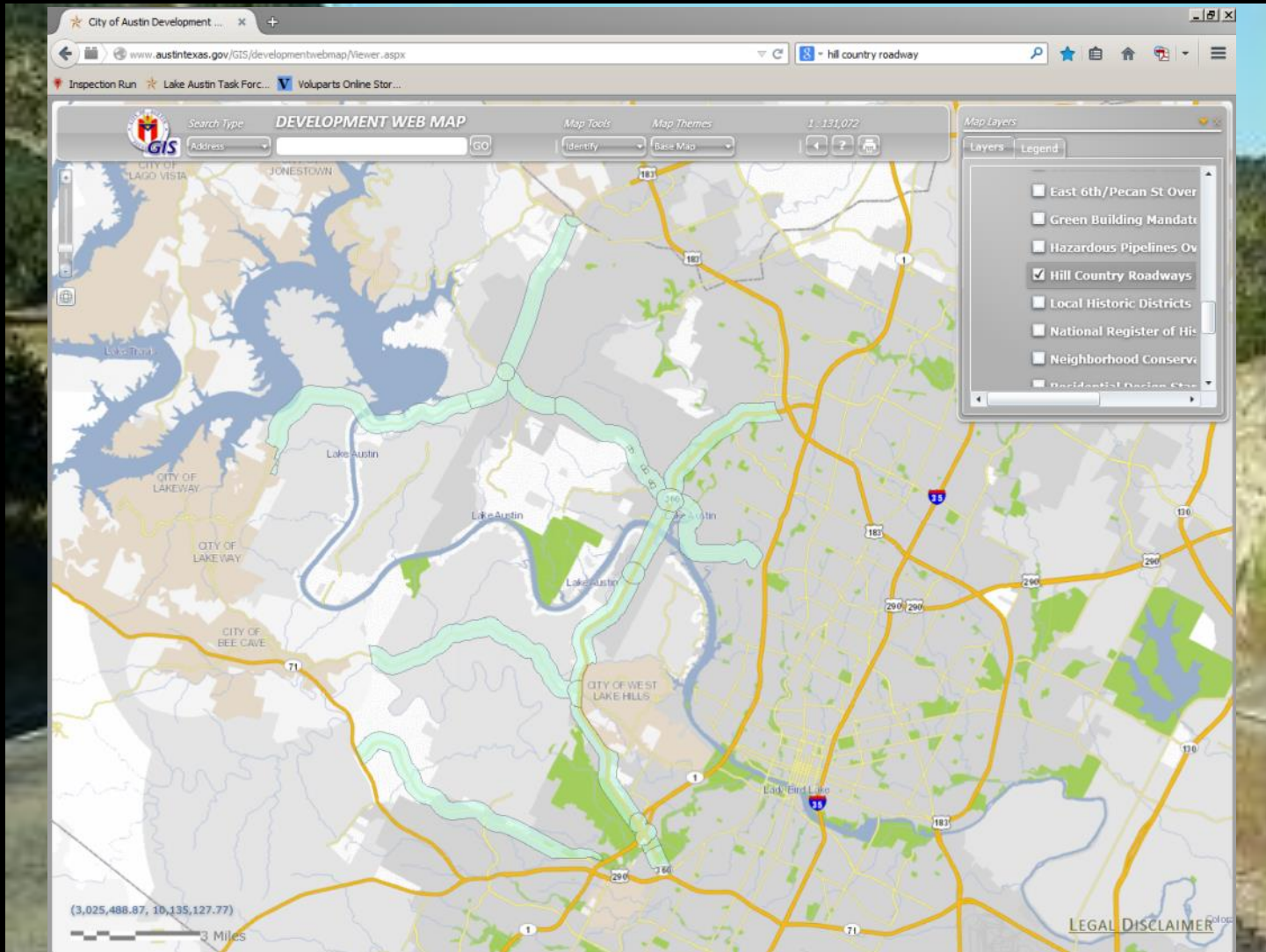
Critical Environmental Features



Creeks and associated Setbacks



Hill Country Roadway Corridors



Threatened and Endangered Species



January February March April May June July August September October November December



Brush Disposal



The Fight Against Catastrophic Wildfire Continues!

Presented by:

Ryan J. Hebrink, LEED AP, CPESC

Ryan.Hebrink@AustinTexas.gov

(512) 974-1910

