

**Austin-Bergstrom International Airport
Aviation Activity Report
Calendar Year 2020 vs 2019**

Combined Terminals

	6/2020	6/2019	Percent Change	1/2020 - 6/2020	1/2019 - 6/2019	Percent Change
ABIA						
Total Passenger Activity						
Domestic Enplaned Revenue	130,614	701,784	-81.39%	1,663,374	3,713,472	-55.21%
Domestic Deplaned Revenue	122,614	687,108	-82.16%	1,678,883	3,682,734	-54.41%
International Enplaned Revenue	0	29,219	-100.00%	30,817	101,537	-69.65%
International Deplaned Revenue	0	27,465	-100.00%	34,001	101,231	-66.41%
Domestic Enplaned Non-Revenue	5,409	15,463	-65.02%	54,647	83,668	-34.69%
Domestic Deplaned Non-Revenue	5,221	14,513	-64.03%	51,006	81,335	-37.29%
International Enplaned Non-Revenue	0	171	-100.00%	481	720	-33.19%
International Deplaned Non-Revenue	0	140	-100.00%	409	635	-35.59%
Intl Enplaned Pre-Cleared Revenue	0	4,992	-100.00%	5,483	18,824	-70.87%
Intl Deplaned Pre-Cleared Revenue	0	4,346	-100.00%	4,626	18,225	-74.62%
Intl Enplaned Pre-Cleared Non-Revenue	0	67	-100.00%	108	234	-53.85%
Intl Deplaned Pre-Cleared Non-Revenue	0	52	-100.00%	100	235	-57.45%
South Terminal Domestic Enplaned Revenue	14,079	63,311	-77.76%	84,563	233,282	-63.75%
South Terminal Domestic Deplaned Revenue	13,448	60,315	-77.70%	87,401	231,858	-62.30%
South Terminal Domestic Enplaned Non-Revenue	93	196	-52.55%	449	777	-42.21%
South Terminal Domestic Deplaned Non-Revenue	100	255	-60.78%	434	964	-54.98%
ABIA Passenger Totals	291,578	1,609,397	-81.88	3,696,782	8,269,731	-55.30
<i>ABIA Enplaned Passenger Totals</i>	<i>150,195</i>	<i>815,203</i>	<i>-81.58</i>	<i>1,839,922</i>	<i>4,152,514</i>	<i>-55.69</i>
<i>ABIA Deplaned Passenger Totals</i>	<i>141,383</i>	<i>794,194</i>	<i>-82.20</i>	<i>1,856,860</i>	<i>4,117,217</i>	<i>-54.90</i>
<i>ABIA Domestic Passenger Totals</i>	<i>291,578</i>	<i>1,542,945</i>	<i>-81.10</i>	<i>3,620,757</i>	<i>8,028,090</i>	<i>-54.90</i>
<i>ABIA International Passenger Totals</i>	<i>0</i>	<i>66,452</i>	<i>-100.00</i>	<i>76,025</i>	<i>241,641</i>	<i>-68.54</i>

CURRENT PASSENGER RECORD = 1,643,016 RECORD SET = JULY 2019

Total Aircraft Operations

Air Carrier	4,044	12,509	-67.67%	42,843	68,464	-37.42%
Commuter & Air Taxi	1,106	1,142	-3.15%	5,874	8,174	-28.14%
Military	373	667	-44.08%	2,276	4,983	-54.32%
General Aviation						
Itinerant	2,988	3,091	-3.33%	15,376	20,840	-26.22%
Local	54	74	-27.03%	268	388	-30.93%
Total G.A.	3,042	3,165	-3.89	15,644	21,228	-26.30
Total Operations	8,565	17,483	-51.01	66,637	102,849	-35.21

**Austin-Bergstrom International Airport
Aviation Activity Report
Calendar Year 2020 vs 2019**

By Terminal

	6/2020	6/2019	Percent Change	1/2020 - 6/2020	1/2019 - 6/2019	Percent Change
<u>Barbara Jordan Terminal (BJT)</u>						
Passenger Activity						
Domestic Enplaned Revenue	130,614	701,784	-81.39%	1,663,374	3,713,472	-55.21%
Domestic Deplaned Revenue	122,614	687,108	-82.16%	1,678,883	3,682,734	-54.41%
International Enplaned Revenue	0	29,219	-100.00%	30,817	101,537	-69.65%
International Deplaned Revenue	0	27,465	-100.00%	34,001	101,231	-66.41%
Domestic Enplaned Non-Revenue	5,409	15,463	-65.02%	54,647	83,668	-34.69%
Domestic Deplaned Non-Revenue	5,221	14,513	-64.03%	51,006	81,335	-37.29%
International Enplaned Non-Revenue	0	171	-100.00%	481	720	-33.19%
International Deplaned Non-Revenue	0	140	-100.00%	409	635	-35.59%
Intl Enplaned Pre-Cleared Revenue	0	4,992	-100.00%	5,483	18,824	-70.87%
Intl Deplaned Pre-Cleared Revenue	0	4,346	-100.00%	4,626	18,225	-74.62%
Intl Enplaned Pre-Cleared Non-Revenue	0	67	-100.00%	108	234	-53.85%
Intl Deplaned Pre-Cleared Non-Revenue	0	52	-100.00%	100	235	-57.45%
Barbara Jordan Terminal Passenger Totals	263,858	1,485,320	-82.24	3,523,935	7,802,850	-54.84
<i>BJT Enplaned Passenger Totals</i>	<i>136,023</i>	<i>751,696</i>	<i>-81.90</i>	<i>1,754,910</i>	<i>3,918,455</i>	<i>-55.21</i>
<i>BJT Deplaned Passenger Totals</i>	<i>127,835</i>	<i>733,624</i>	<i>-82.57</i>	<i>1,769,025</i>	<i>3,884,395</i>	<i>-54.46</i>
<i>BJT Domestic Passenger Totals</i>	<i>263,858</i>	<i>1,418,868</i>	<i>-81.40</i>	<i>3,447,910</i>	<i>7,561,209</i>	<i>-54.40</i>
<i>BJT International Passenger Totals</i>	<i>0</i>	<i>66,452</i>	<i>-100.00</i>	<i>76,025</i>	<i>241,641</i>	<i>-68.54</i>
<u>South Terminal (ST)</u>						
Passenger Activity						
South Terminal Domestic Enplaned Revenue	14,079	63,311	-77.76%	84,563	233,282	-63.75%
South Terminal Domestic Deplaned Revenue	13,448	60,315	-77.70%	87,401	231,858	-62.30%
South Terminal Domestic Enplaned Non-Revenue	93	196	-52.55%	449	777	-42.21%
South Terminal Domestic Deplaned Non-Revenue	100	255	-60.78%	434	964	-54.98%
South Terminal Passenger Totals	27,720	124,077	-77.66	172,847	466,881	-62.98
<i>ST Enplaned Passenger Totals</i>	<i>14,172</i>	<i>63,507</i>	<i>-77.68</i>	<i>85,012</i>	<i>234,059</i>	<i>-63.68</i>
<i>ST Deplaned Passenger Totals</i>	<i>13,548</i>	<i>60,570</i>	<i>-77.63</i>	<i>87,835</i>	<i>232,822</i>	<i>-62.27</i>

**Austin-Bergstrom International Airport
Aviation Activity Report
Calendar Year 2020 vs 2019**

	6/2020	6/2019	Percent Change	1/2020 - 6/2020	1/2019 - 6/2019	Percent Change
<u>Total Cargo Activity</u>						
Mail						
Domestic Enplaned Mail	148,965	179,178	-16.86%	1,023,733	1,206,469	-15.15%
Domestic Deplaned Mail	210,114	577,964	-63.65%	2,624,345	4,072,029	-35.55%
International Enplaned Mail	0	0	0.00%	0	0	0.00%
International Deplaned Mail	0	0	0.00%	0	110,830	-100.00%
South Terminal-Domestic Enplaned Mail	0	0	0.00%	0	0	0.00%
South Terminal-Domestic Deplaned Mail	0	0	0.00%	0	0	0.00%
Mail Totals	359,079	757,142	-52.57	3,648,078	5,389,328	-32.31
Cargo						
Domestic Enplaned Cargo	6,484,471	4,572,947	41.80%	30,953,701	29,207,152	5.98%
Domestic Deplaned Cargo	10,316,918	6,432,030	60.40%	46,513,845	39,137,932	18.85%
International Enplaned Cargo	12,401	457,619	-97.29%	1,023,330	2,300,396	-55.52%
International Deplaned Cargo	9,164	194,888	-95.30%	518,751	1,860,766	-72.12%
South Terminal-Domestic Enplaned Cargo	0	0	0.00%	0	0	0.00%
South Terminal-Domestic Deplaned Cargo	0	0	0.00%	0	0	0.00%
Cargo Totals	16,822,954	11,657,484	44.31	79,009,627	72,506,246	8.97
Belly Freight						
Domestic Enplaned Belly Freight	117,047	312,339	-62.53%	1,445,574	1,991,601	-27.42%
Domestic Deplaned Belly Freight	168,668	449,015	-62.44%	2,238,319	3,316,732	-32.51%
International Enplaned Belly Freight	0	430,958	-100.00%	1,033,720	1,979,396	-47.78%
International Deplaned Belly Freight	0	637,672	-100.00%	2,056,175	3,889,323	-47.13%
South Terminal-Domestic Enplaned Belly Frght	0	0	0.00%	0	0	0.00%
South Terminal-Domestic Deplaned Belly Frght	0	0	0.00%	0	0	0.00%
Belly Freight Totals	285,715	1,829,984	-84.39	6,773,788	11,177,052	-39.40
Cargo Totals (Mail, Cargo, Belly Freight)	17,467,748	14,244,610	22.63	89,431,493	89,072,626	0.40
<i>Enplaned Cargo Totals</i>	<i>6,762,884</i>	<i>5,953,041</i>	<i>13.60</i>	<i>35,480,058</i>	<i>36,685,014</i>	<i>-3.28</i>
<i>Deplaned Cargo Totals</i>	<i>10,704,864</i>	<i>8,291,569</i>	<i>29.11</i>	<i>53,951,435</i>	<i>52,387,612</i>	<i>2.99</i>
<i>Domestic Cargo Totals</i>	<i>17,446,183</i>	<i>12,523,473</i>	<i>39.31</i>	<i>84,799,517</i>	<i>78,931,915</i>	<i>7.43</i>
<i>International Cargo Totals</i>	<i>21,565</i>	<i>1,721,137</i>	<i>-98.75</i>	<i>4,631,976</i>	<i>10,140,711</i>	<i>-54.32</i>

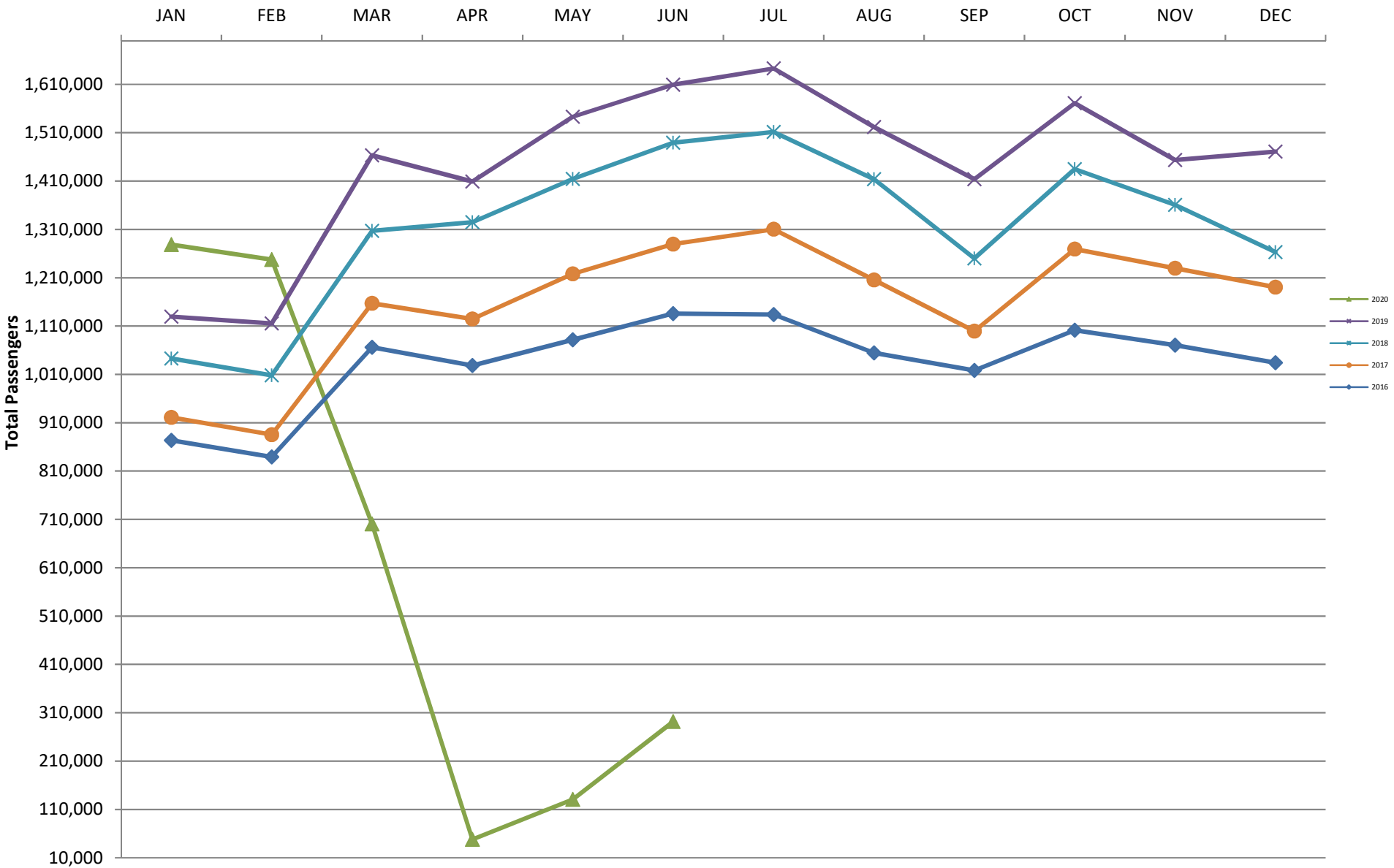
CURRENT CARGO RECORD = 40,215,518

RECORD SET = MARCH 2001

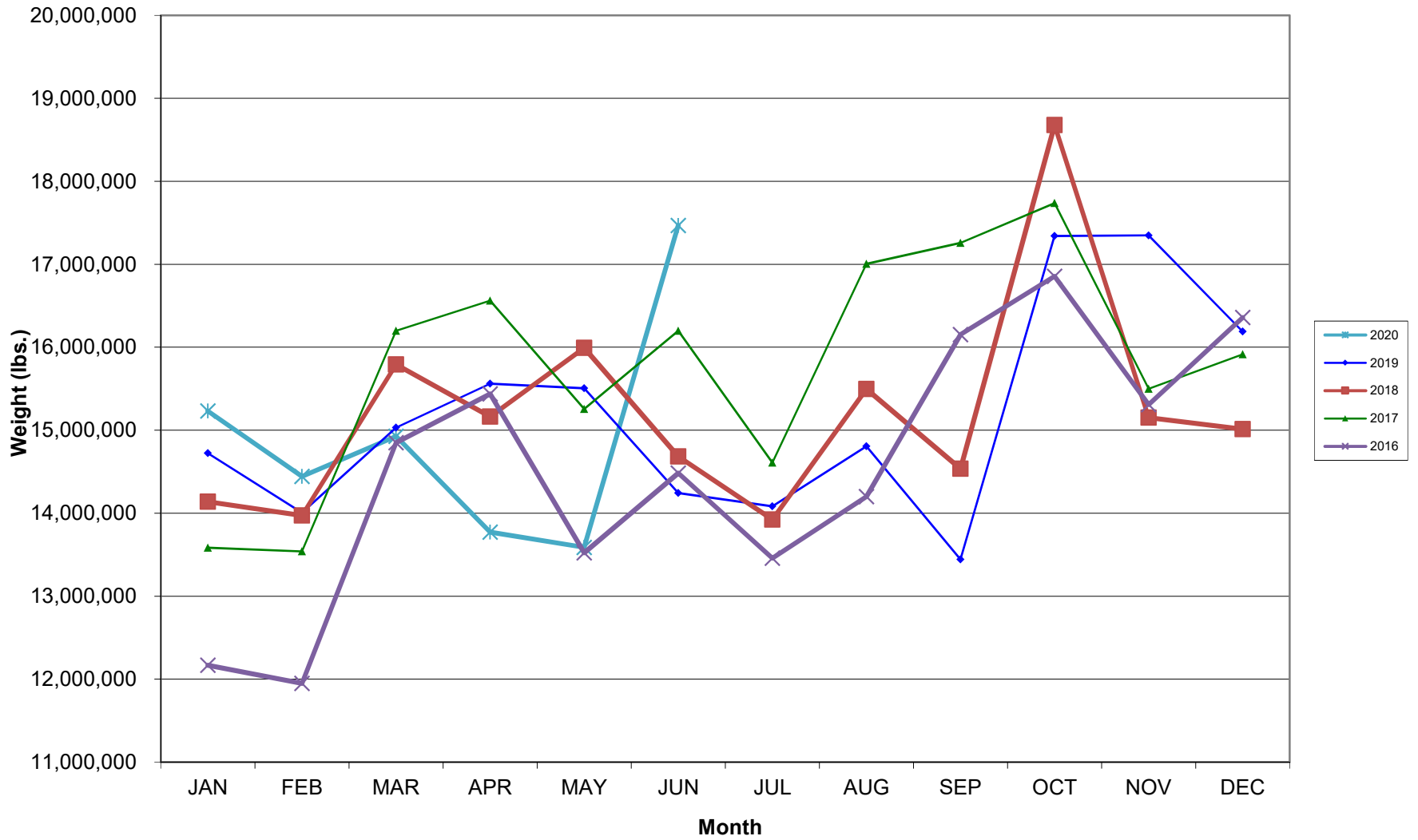
AUS – Airline Codes
June 2020

<u>Code</u>	<u>Carrier</u>
AS	Alaska Airlines, Inc.
G4	Allegiant
AA	American Airlines, Inc.
DL	Delta Airlines
F9	Frontier Airlines
B6	JetBlue Airways Corp.
WN	Southwest Airlines
NK	Spirit Airlines
SY	Sun Country Airlines/MN Airlines LLC
UA	United Airlines, Inc.

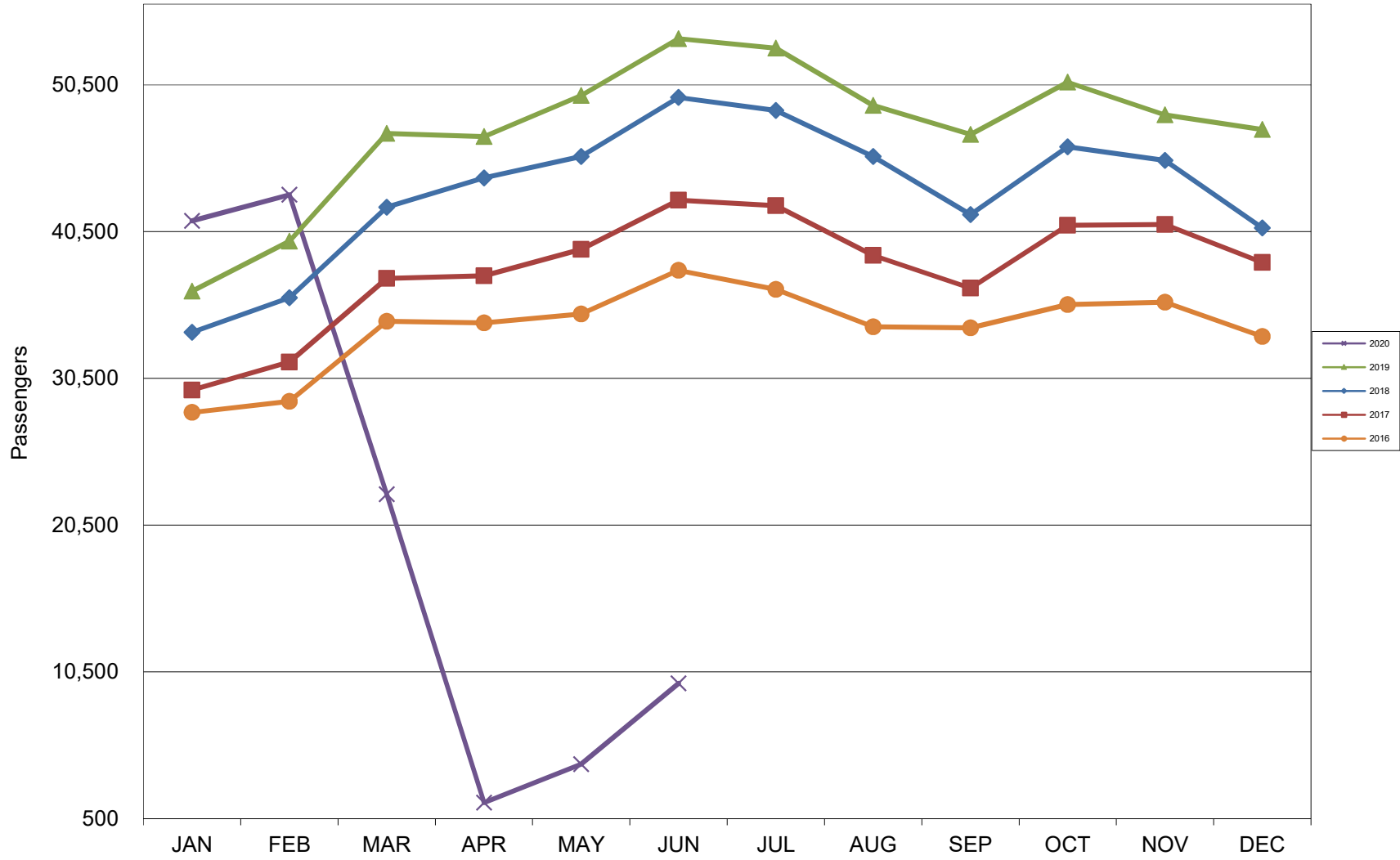
AUSTIN PASSENGER TRAFFIC 5 Year Trend



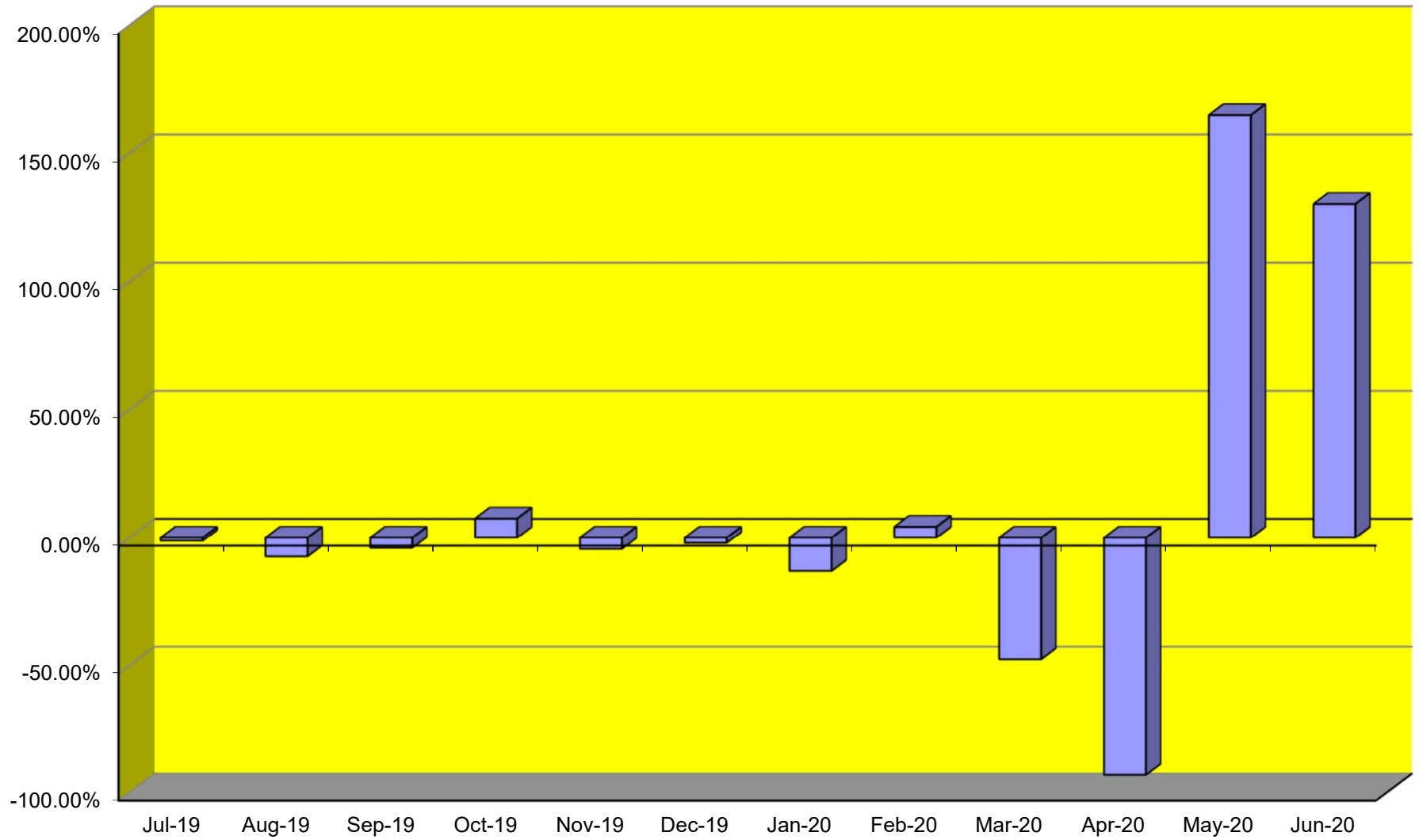
TOTAL CARGO POUNDAGE - AUSTIN, TEXAS



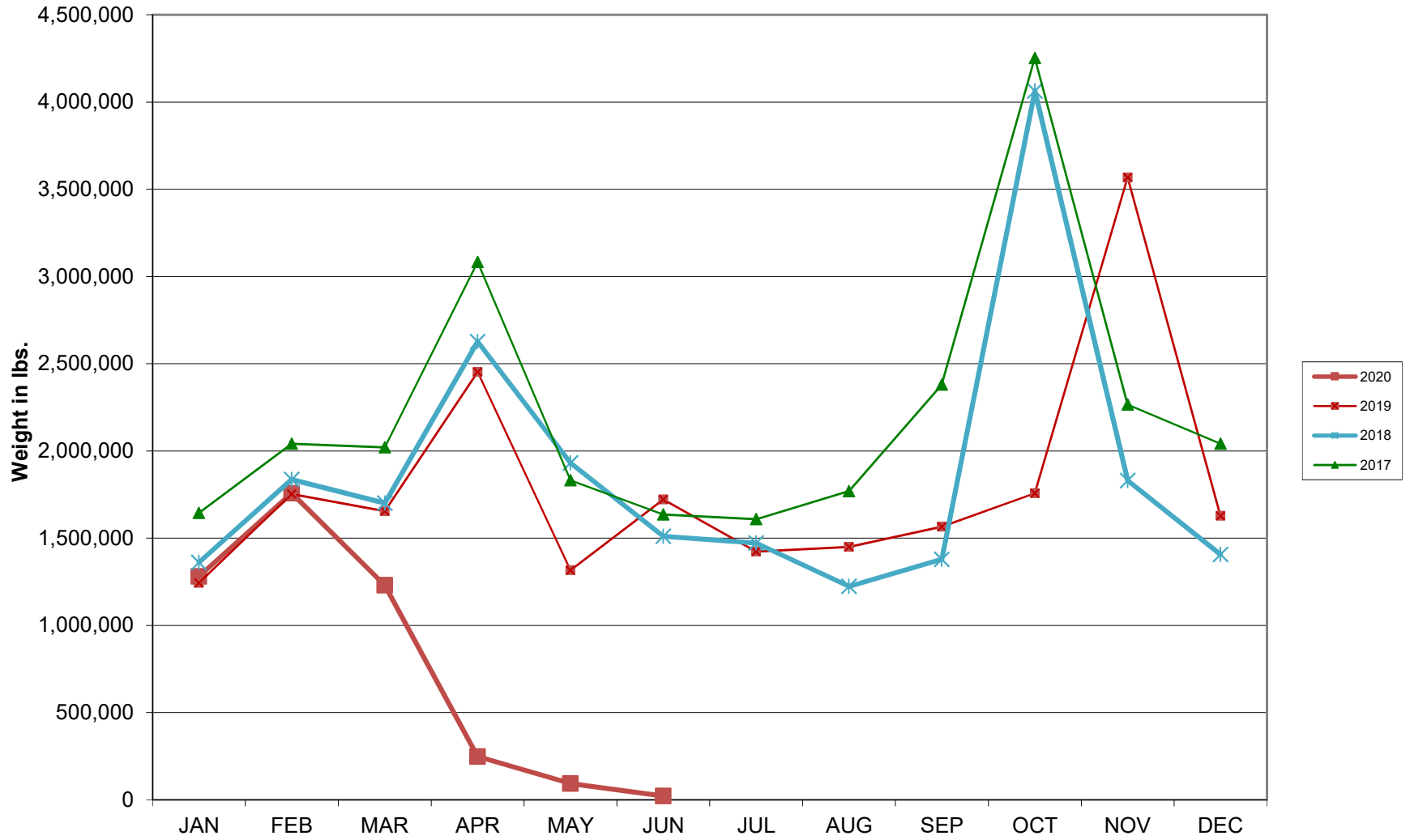
Average Daily Passengers



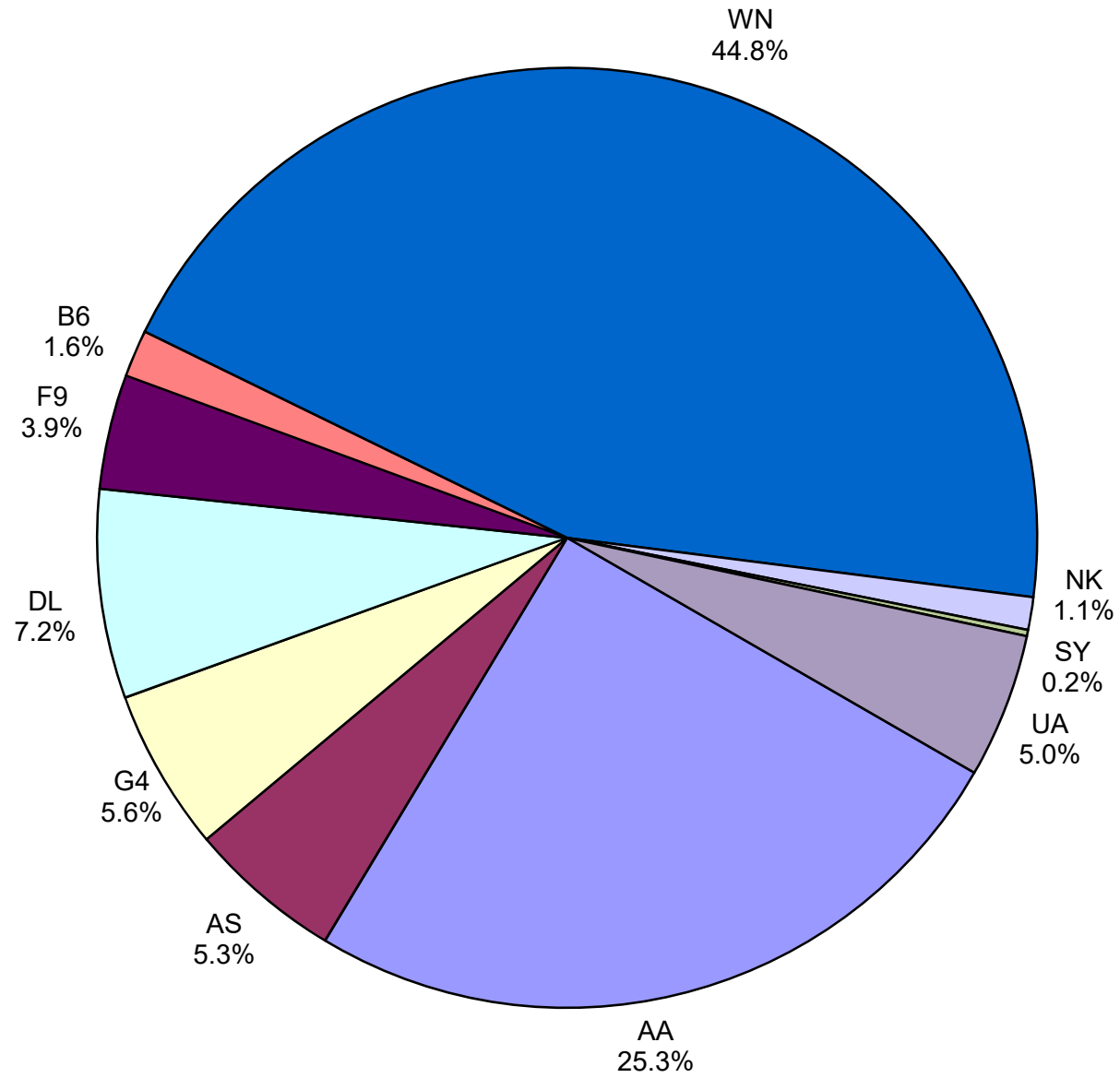
Monthly % Change in Average Daily Passengers



HISTORY OF INTERNATIONAL AIR CARGO



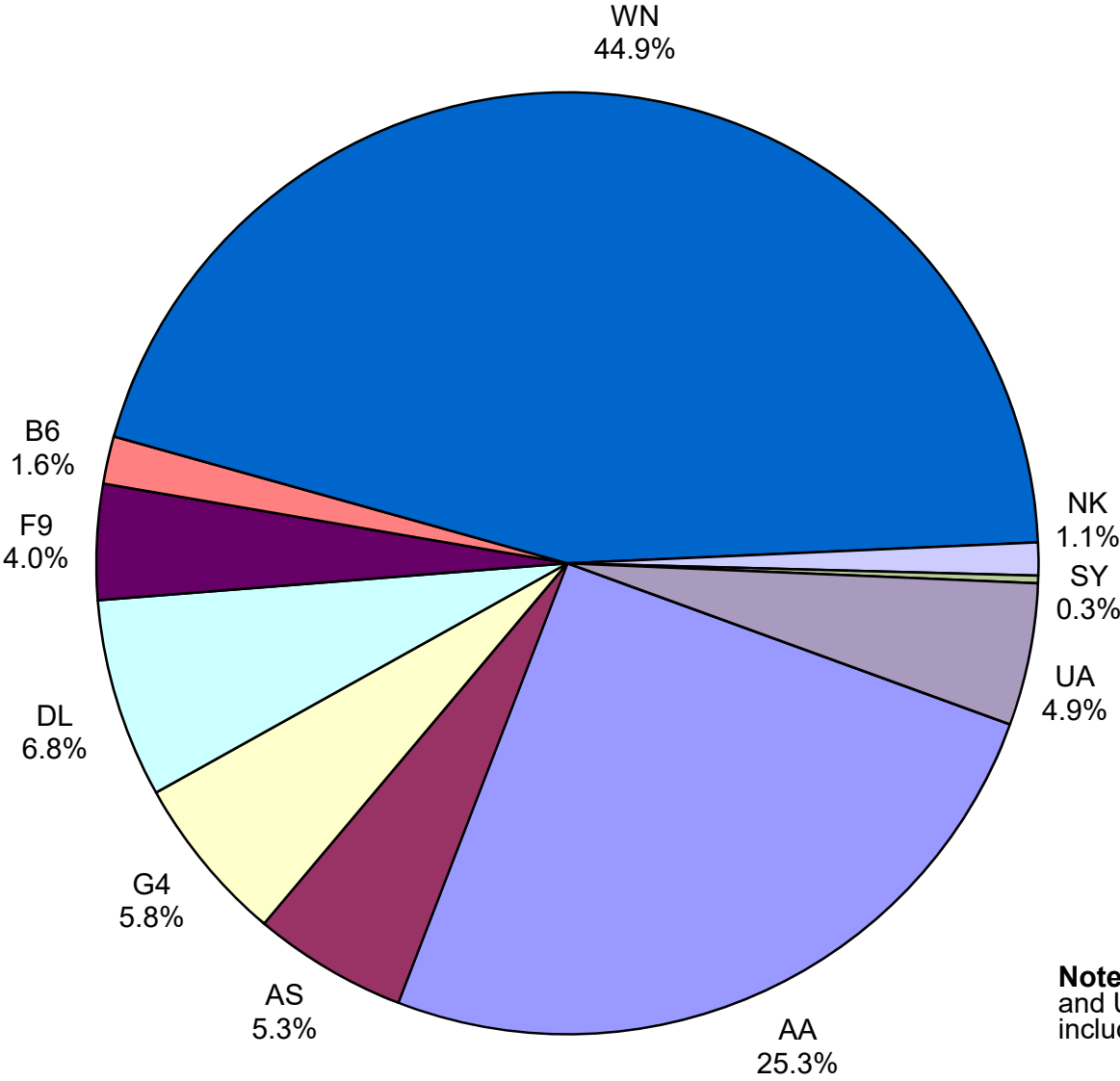
Total Passengers June 2020



Other:

Note: American, Delta and United Airlines percentages include Affiliates.

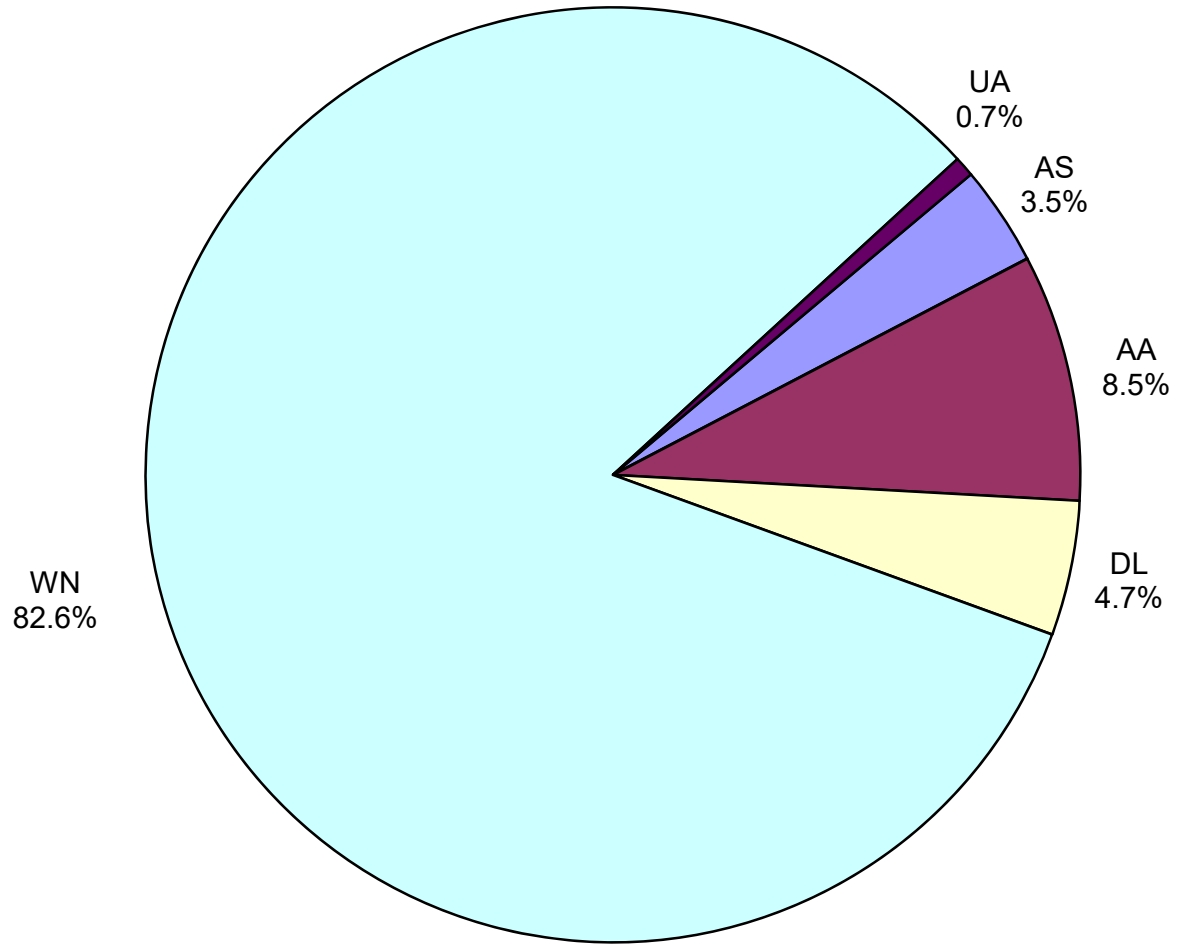
**All Passenger Carriers
Enplaned Revenue Passengers
June 2020**



Other:

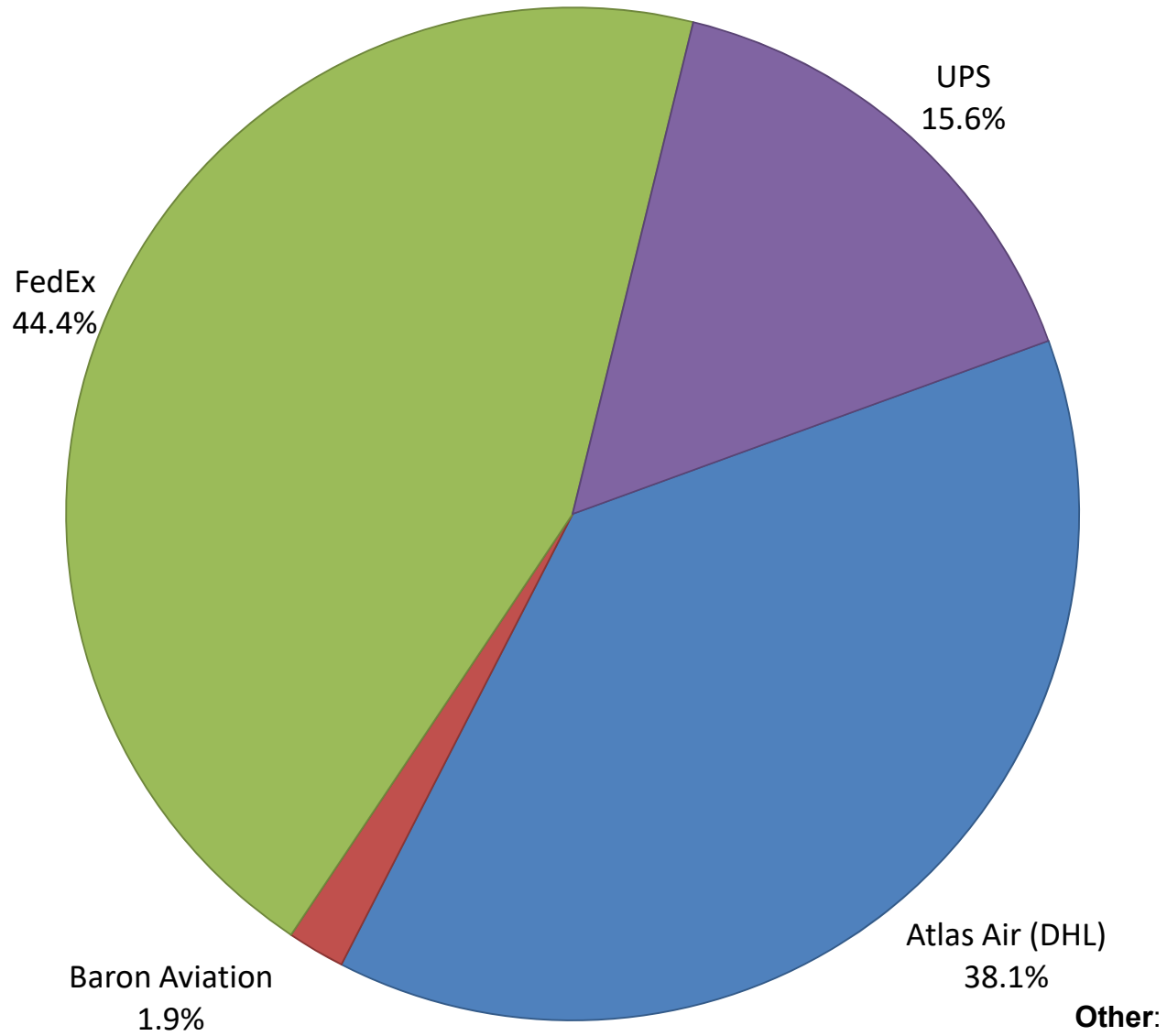
Note: American/US Airways, Delta and United Airlines percentages include Affiliates.

**AUS Belly Freight Market Shares
June 2020**

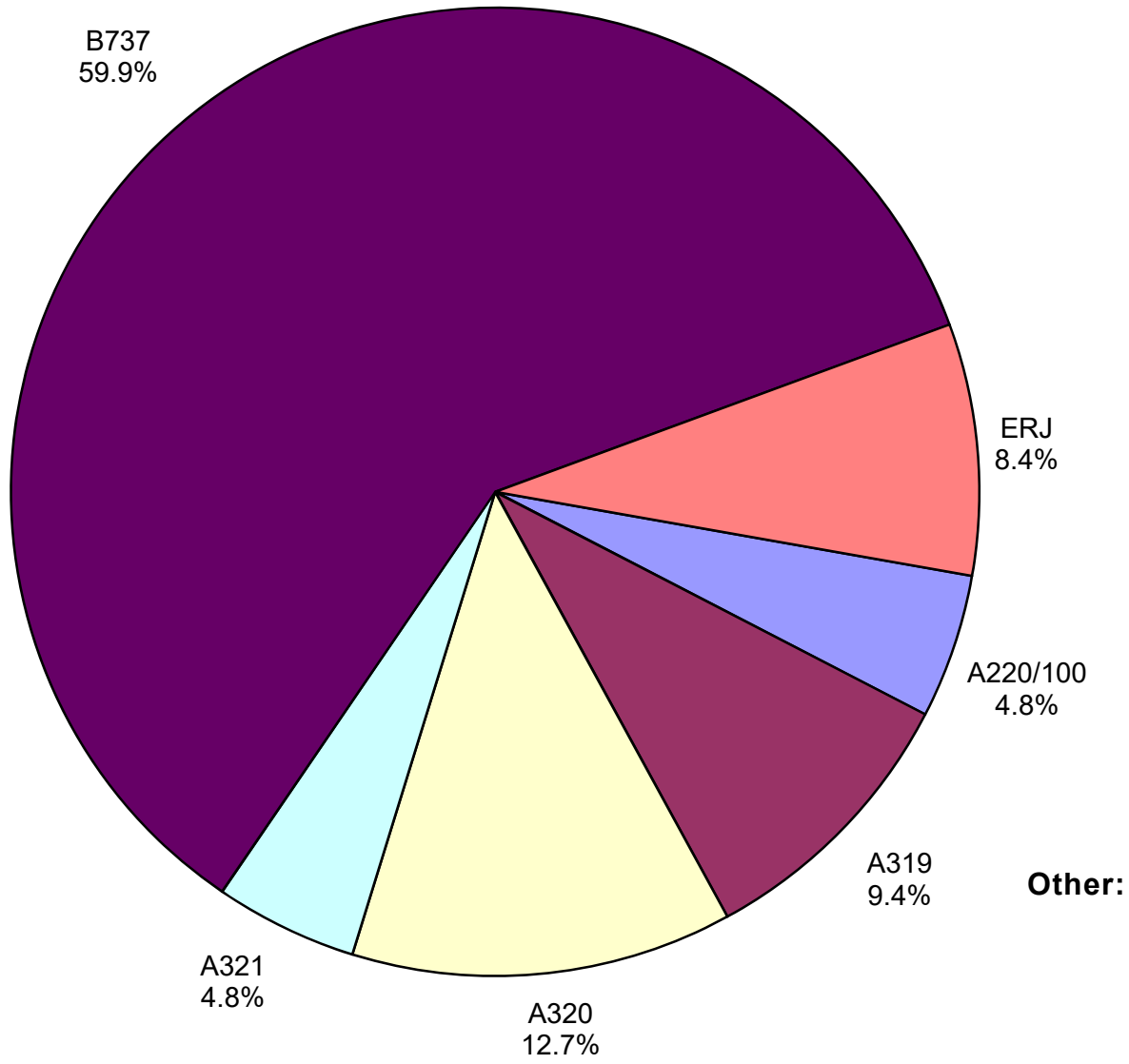


Other =

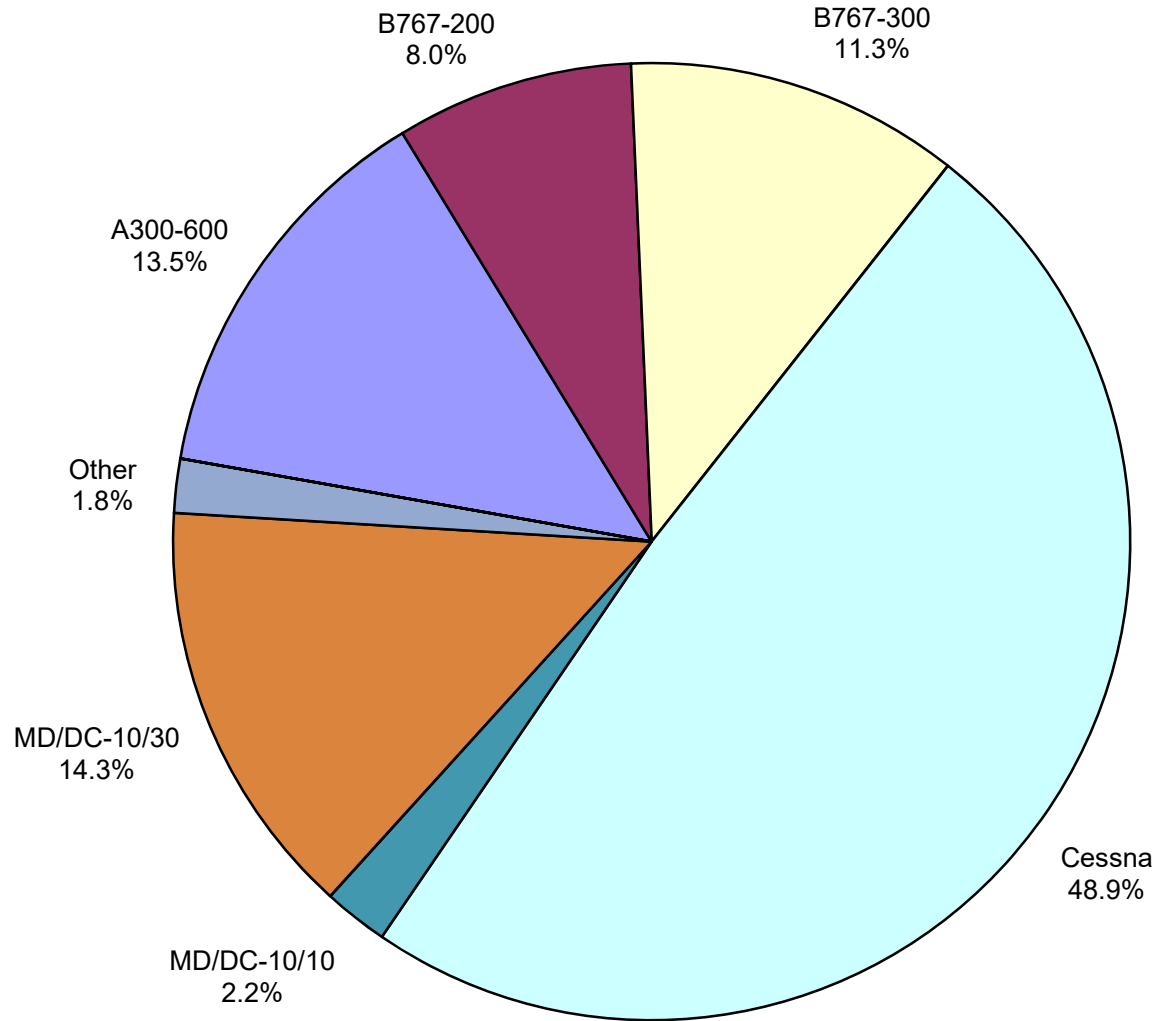
Air Cargo Market Share June 2020



**AUS Scheduled Passenger Aircraft Fleet Mix
June 2020**



**AUS Scheduled Cargo Aircraft Fleet Mix
June 2020**



Austin-Bergstrom International Airport

Pax Detail Report - June, 2020

Company	Period				YTD				2020 Share	2019 Share	Share Diff
	6/2020	6/2019	Difference	Change	YTD 2020	YTD 2019	Difference	Change			
Aeroenlaces Nacionales, SA DE CV	0	0	0	0.0	197	0	197	0.0	0.0	0.0	0.0
Aerovias de Mexico S.A. de C.V. Pre Bankruptcy	0	4,578	-4,578	-100.0	9,915	19,632	-9,717	-49.5	0.3	0.2	0.1
Air Canada	0	7,205	-7,205	-100.0	10,317	33,407	-23,090	-69.1	0.3	0.4	-0.1
Air New Zealand Limited	0	0	0	0.0	0	302	-302	-100.0	0.0	0.0	0.0
Alaska Airlines INC	15,465	55,584	-40,119	-72.2	140,325	298,421	-158,096	-53.0	3.8	3.6	0.2
Allegiant Air LLC	16,223	23,782	-7,559	-31.8	40,065	107,494	-67,429	-62.7	1.1	1.3	-0.2
American Airlines INC	73,703	257,710	-184,007	-71.4	736,946	1,494,454	-757,508	-50.7	19.9	18.1	1.8
British Airways PLC	0	18,807	-18,807	-100.0	29,217	91,554	-62,337	-68.1	0.8	1.1	-0.3
Concesionaria Vuela Compañía de Aviación, S.A.P.I. de	0	0	0	0.0	0	434	-434	-100.0	0.0	0.0	0.0
Delta Air Lines	20,968	227,132	-206,164	-90.8	502,868	1,122,435	-619,567	-55.2	13.6	13.6	0.0
Deutsche Lufthansa AG	0	9,336	-9,336	-100.0	15,883	16,755	-872	-5.2	0.4	0.2	0.2
Frontier Airlines INC	11,497	100,295	-88,798	-88.5	132,782	356,169	-223,387	-62.7	3.6	4.3	-0.7
JetBlue Airways Corporation	4,714	49,729	-45,015	-90.5	127,086	280,492	-153,406	-54.7	3.4	3.4	0.0
Miami Air International INC	0	93	-93	-100.0	121	869	-748	-86.1	0.0	0.0	0.0
Norwegian Air UK LTD	0	8,214	-8,214	-100.0	3,474	31,308	-27,834	-88.9	0.1	0.4	-0.3
Scandinavian Airlines	0	0	0	0.0	0	423	-423	-100.0	0.0	0.0	0.0
Southwest Airlines	130,592	536,463	-405,871	-75.7	1,232,395	2,862,792	-1,630,397	-57.0	33.3	34.6	-1.3
Spirit Airlines Inc	3,278	78,058	-74,780	-95.8	212,946	317,106	-104,160	-32.8	5.8	3.8	2.0
Sun Country Airlines/MN Airlines LLC	637	4,496	-3,859	-85.8	1,280	10,797	-9,517	-88.1	0.0	0.1	-0.1
Swift Air LLC	0	0	0	0.0	928	1,267	-339	-26.8	0.0	0.0	0.0
United Airlines INC	14,501	224,590	-210,089	-93.5	500,037	1,215,218	-715,181	-58.9	13.5	14.7	-1.2
Vacation Express	0	1,073	-1,073	-100.0	0	1,073	-1,073	-100.0	0.0	0.0	0.0
VIA Airlines, INC	0	0	0	0.0	0	3,218	-3,218	-100.0	0.0	0.0	0.0
WestJet	0	2,252	-2,252	-100.0	0	4,111	-4,111	-100.0	0.0	0.0	0.0
Report Totals	291,578	1,609,397	-1,317,819	-81.88%	3,696,782	8,269,731	-4,572,949	-55.30%	99.90%	99.80%	

Statistics Included in Report

Domestic Passengers: Enplaned Revenue, Deplaned Revenue, Enplaned Non-Revenue, Deplaned Non-Revenue

International Passengers: Enplaned Revenue, Deplaned Revenue, Enplaned Non-Revenue, Deplaned Non-Revenue

International Pre-Cleared Passengers: Enplaned Revenue, Deplaned Revenue, Enplaned Non-Revenue, Deplaned Non-Revenue

South Terminal Domestic Passengers: Enplaned Revenue, Deplaned Revenue, Enplaned Non-Revenue, Deplaned Non-Revenue

Austin-Bergstrom International Airport Summary Landings Report

Landing Type: Total

Month	2020		2019		2018		% Change 2020- 2019		% Change 2019- 2018	
	Count	Weight	Count	Weight	Count	Weight	Count	Weight	Count	Weight
January	5,762	812,175,948	5,348	733,746,679	5,086	688,923,110	7.98%	10.62%	4.78%	4.93%
February	5,382	764,833,023	5,040	692,708,930	4,706	637,500,756	8.41%	10.66%	7.66%	9.36%
March	5,278	742,099,772	5,964	825,483,911	5,643	760,648,260	-11.17%	-9.35%	5.38%	6.89%
April	1,884	264,508,162	5,899	815,621,798	5,797	793,367,736	-68.87%	-68.74%	-0.34%	0.56%
May	1,608	223,266,578	6,294	881,747,150	6,117	831,431,763	-76.11%	-76.59%	-1.13%	0.20%
June	2,119	293,669,395	6,322	890,410,020	6,211	852,438,818	-68.98%	-69.80%	-2.30%	-1.73%
July	0	0	6,551	915,103,306	6,346	869,502,671	-100.00%	-100.00%	-0.12%	0.54%
August	0	0	6,447	906,499,773	6,245	861,046,997	-100.00%	-100.00%	-0.96%	-0.55%
September	0	0	6,020	848,899,951	5,737	790,731,351	-100.00%	-100.00%	1.37%	2.73%
October	0	0	6,459	916,700,076	6,078	846,310,860	-100.00%	-100.00%	1.67%	2.68%
November	0	0	5,924	836,527,780	5,684	780,994,101	-100.00%	-100.00%	3.81%	4.20%
December	0	0	6,078	848,973,148	5,600	761,317,385	-100.00%	-100.00%	11.36%	13.06%
Totals For Selected Period	22,033	3,100,552,878	34,867	4,839,718,488	33,560	4,564,310,443	-36.81%	-35.94%	3.89%	6.03%
Yearly Totals	22,033	3,100,552,878	72,346	10,112,422,522	69,250	9,474,213,808	-69.54%	-69.34%	4.47%	6.74%